

CCL19 Antibody

Rabbit mAb

Catalog # AP90201

Product Information

Application	WB
Primary Accession	Q99731
Reactivity	Human
Clonality	Monoclonal
Other Names	CCL 19;CK beta 11;EBI 1 ligand chemokine;ELC;Exodus3;;MIP3 beta;SCYA 19;SCYA19
Isotype	Rabbit IgG
Host	Rabbit
Calculated MW	10993

Additional Information

Dilution	WB 1:500~1:2000
Purification	Affinity-chromatography
Immunogen	A synthesized peptide derived from human CCL19
Description	May play a role not only in inflammatory and immunological responses but also in normal lymphocyte recirculation and homing. May play an important role in trafficking of T-cells in thymus, and T-cell and B-cell migration to secondary lymphoid organs. Binds to chemokine receptor CCR7. Recombinant CCL19 shows potent chemotactic activity for T-cells and B-cells but not for granulocytes and monocytes.
Storage Condition and Buffer	Rabbit IgG in phosphate buffered saline , pH 7.4, 150mM NaCl, 0.02% sodium azide and 50% glycerol. Store at +4°C short term. Store at -20°C long term. Avoid freeze / thaw cycle.

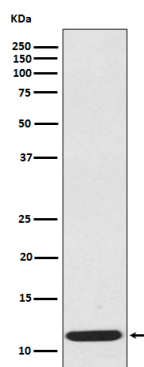
Protein Information

Name	CCL19
Synonyms	ELC, MIP3B, SCYA19
Function	May play a role not only in inflammatory and immunological responses but also in normal lymphocyte recirculation and homing. May play an important role in trafficking of T-cells in thymus, and T-cell and B-cell migration to secondary lymphoid organs. Binds to chemokine receptor CCR7. Recombinant CCL19 shows potent chemotactic activity for T-cells and B-cells but not for granulocytes and monocytes. Binds to atypical chemokine receptor ACKR4 and mediates the recruitment of beta- arrestin (ARRB1/2) to ACKR4.
Cellular Location	Secreted.

Tissue Location

Expressed at high levels in the lymph nodes, thymus and appendix.
Intermediate levels seen in colon and trachea, while low levels found in spleen, small intestine, lung, kidney and stomach

Images



Western blot analysis of extracts from CCL19 recombinant protein, using CCL19 antibody.

Please note: All products are 'FOR RESEARCH USE ONLY. NOT FOR USE IN DIAGNOSTIC OR THERAPEUTIC PROCEDURES'.