

Vimentin Antibody

Rabbit mAb
Catalog # AP90192

Product Information

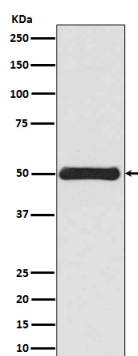
Application	WB, IHC, IF, FC, ICC, IHF
Primary Accession	P08670
Reactivity	Rat, Human, Mouse
Clonality	Monoclonal
Other Names	FLJ36605; VIM; VIME; Vimentin
Isotype	Rabbit IgG
Host	Rabbit
Calculated MW	54 KDa

Additional Information

Dilution	WB 1:500~1:2000 IHC 1:50~1:200 ICC/IF 1:50~1:200 FC 1:30
Purification	Affinity-chromatography
Immunogen	A synthesized peptide derived from human Vimentin
Description	Vimentins are class-III intermediate filaments found in various non-epithelial cells, especially mesenchymal cells. Vimentin is attached to the nucleus, endoplasmic reticulum, and mitochondria, either laterally or terminally. Involved with LARP6 in the stabilization of type I collagen mRNAs for CO1A1 and CO1A2.
Storage Condition and Buffer	Rabbit IgG in phosphate buffered saline , pH 7.4, 150mM NaCl, 0.02% sodium azide and 50% glycerol. Store at +4°C short term. Store at -20°C long term. Avoid freeze / thaw cycle.

Protein Information

Images



Western blot analysis of Vimentin expression in HEK293 cell lysate.

Image not found : 202311/AP90192-IHC.jpg	Immunohistochemical analysis of paraffin-embedded human colon, using Vimentin Antibody.
Image not found : 202311/AP90192-IF.jpg	Immunofluorescent analysis of Hela cells, using Vimentin Antibody.
Image not found : 202311/AP90192-wb5.jpg	Prostaglandin E1 Inhibited Diabetes-Induced Phenotypic Switching of Vascular Smooth Muscle Cells Through Activating Autophagy. -Cellular Physiology and Biochemistry
Image not found : 202311/AP90192-wb6.jpg	Overexpression of the 14-3-3 γ protein in uterine leiomyoma cells results in growth retardation and increased apoptosis. -Cellular Signalling

Please note: All products are 'FOR RESEARCH USE ONLY. NOT FOR USE IN DIAGNOSTIC OR THERAPEUTIC PROCEDURES'.