

HIP1 Antibody

Rabbit mAb

Catalog # AP90182

Product Information

Application	WB, IF, ICC, IP
Primary Accession	O00291
Reactivity	Rat, Human, Mouse
Clonality	Monoclonal
Other Names	HIP 1; hip1; HIP1/PDGFRB fusion gene; HIPI ; Huntingtin interacting protein 1;
Isotype	Rabbit IgG
Host	Rabbit
Calculated MW	116221

Additional Information

Dilution	WB 1:500~1:2000 ICC/IF 1:50~1:200 IP 1:30
Purification	Affinity-chromatography
Immunogen	A synthesized peptide derived from human HIP1
Description	Plays a role in clathrin-mediated endocytosis and trafficking. Involved in regulating AMPA receptor trafficking in the central nervous system in an NMDA-dependent manner. Enhances androgen receptor (AR)-mediated transcription.
Storage Condition and Buffer	Rabbit IgG in phosphate buffered saline , pH 7.4, 150mM NaCl, 0.02% sodium azide and 50% glycerol. Store at +4°C short term. Store at -20°C long term. Avoid freeze / thaw cycle.

Protein Information

Name	HIP1
Function	Plays a role in clathrin-mediated endocytosis and trafficking (PubMed: 11532990 , PubMed: 11577110 , PubMed: 11889126). Involved in regulating AMPA receptor trafficking in the central nervous system in an NMDA-dependent manner (By similarity). Regulates presynaptic nerve terminal activity (By similarity). Enhances androgen receptor (AR)- mediated transcription (PubMed: 16027218). May act as a proapoptotic protein that induces cell death by acting through the intrinsic apoptosis pathway (PubMed: 11007801). Binds 3-phosphoinositides (via ENTH domain) (PubMed: 14732715). May act through the ENTH domain to promote cell survival by stabilizing receptor tyrosine kinases following ligand-induced endocytosis (PubMed: 14732715). May play a functional role in the cell filament networks (PubMed: 18790740). May be required for differentiation, proliferation, and/or survival of somatic and germline progenitors (PubMed: 11007801 , PubMed: 12163454).

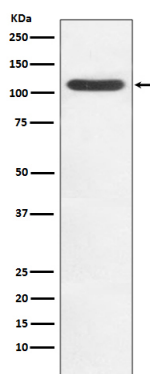
Cellular Location

Cytoplasm. Nucleus. Endomembrane system. Cytoplasmic vesicle, clathrin-coated vesicle membrane. Note=Shuttles between cytoplasm and nucleus. Nuclear translocation can be induced by AR

Tissue Location

Ubiquitously expressed with the highest level in brain. Expression is up-regulated in prostate and colon cancer

Images



Western blot analysis of HIP1 in Jurkat cell lysate.

Please note: All products are 'FOR RESEARCH USE ONLY. NOT FOR USE IN DIAGNOSTIC OR THERAPEUTIC PROCEDURES'.