

Collagen I Antibody

Rabbit mAb

Catalog # AP90179

Product Information

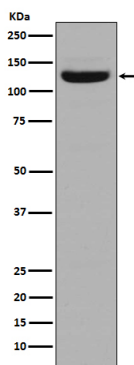
| | |
|--------------------------|---|
| Application | WB, IHC |
| Primary Accession | P02452/P08123 |
| Reactivity | Human, Bovine |
| Clonality | Monoclonal |
| Other Names | Collagen alpha-1(I) chain, Alpha-1 type I collagen, COL1A1; |
| Isotype | Rabbit IgG |
| Host | Rabbit |
| Calculated MW | 139 KDa |

Additional Information

| | |
|-------------------------------------|--|
| Dilution | WB 1:500~1:2000 IHC 1:50~1:200 |
| Purification | Affinity-chromatography |
| Immunogen | A synthesized peptide derived from human Collagen I |
| Description | This gene encodes one of the chains for type I collagen, the fibrillar collagen found in most connective tissues. Mutations in this gene are associated with osteogenesis imperfecta, Ehlers-Danlos syndrome, idiopathic osteoporosis, and atypical Marfan syndrome. |
| Storage Condition and Buffer | Rabbit IgG in phosphate buffered saline , pH 7.4, 150mM NaCl, 0.02% sodium azide and 50% glycerol. Store at +4°C short term. Store at -20°C long term. Avoid freeze / thaw cycle. |

Protein Information

Images



Western blot analysis of Collagen I in Human stomach tissue lysate.

| | |
|--|--|
| Image not found : 202311/AP90179-IHC.jpg | Immunohistochemical analysis of paraffin-embedded human kidney, using Collagen I Antibody. |
| Image not found : 202311/AP90179-wb5.jpg | Prostaglandin E1 Inhibited Diabetes-Induced Phenotypic Switching of Vascular Smooth Muscle Cells Through Activating Autophagy. -Cellular Physiology and Biochemistry |
| Image not found : 202311/AP90179-wb6.jpg | Erjingwan Extracts Exert Antiaging Effects of Skin through Activating Nrf2 and Inhibiting NF-B. -Evidence-based Complementary and Alternative Medicine |

Please note: All products are 'FOR RESEARCH USE ONLY. NOT FOR USE IN DIAGNOSTIC OR THERAPEUTIC PROCEDURES'.