

EGFR (ErbB 1) Antibody

Rabbit mAb

Catalog # AP90171

Product Information

Application	WB, IHC, IF, FC, ICC, IP, IHF
Primary Accession	P00533
Reactivity	Rat, Human, Mouse
Clonality	Monoclonal
Other Names	ERBB1; Epidermal growth factor receptor precursor; Receptor protein-tyrosine kinase ErbB-1; kinase EGFR;
Isotype	Rabbit IgG
Host	Rabbit
Calculated MW	134277

Additional Information

Dilution	WB 1:5000~1:10000 IHC 1:50~1:200 ICC/IF 1:50~1:200 IP 1:50 FC 1:50
Purification	Affinity-chromatography
Immunogen	A synthesized peptide derived from human EGFR Full-length sequence 1210aa around the aa1092
Description	EGFR is a receptor tyrosine kinase. Receptor for epidermal growth factor (EGF) and related growth factors including TGF-alpha, amphiregulin, betacellulin, heparin-binding EGF-like growth factor, GP30 and vaccinia virus growth factor. Is involved in the control of cell growth and differentiation.
Storage Condition and Buffer	Rabbit IgG in phosphate buffered saline , pH 7.4, 150mM NaCl, 0.02% sodium azide and 50% glycerol. Store at +4°C short term. Store at -20°C long term. Avoid freeze / thaw cycle.

Protein Information

Name	EGFR (HGNC:3236)
Synonyms	ERBB, ERBB1, HER1
Function	Receptor tyrosine kinase binding ligands of the EGF family and activating several signaling cascades to convert extracellular cues into appropriate cellular responses (PubMed: 10805725 , PubMed: 27153536 , PubMed: 2790960 , PubMed: 35538033). Known ligands include EGF, TGFA/TGF- alpha, AREG, epigen/EPGN, BTC/betacellulin, epiregulin/EREG and HBEGF/heparin-binding EGF (PubMed: 12297049 , PubMed: 15611079 , PubMed: 17909029 , PubMed: 20837704 , PubMed: 27153536 , PubMed: 2790960 , PubMed: 7679104 , PubMed: 8144591 , PubMed: 9419975). Ligand binding triggers receptor homo- and/or heterodimerization and autophosphorylation on key cytoplasmic residues. The phosphorylated receptor recruits adapter proteins like GRB2 which in turn activates complex downstream signaling cascades. Activates at

least 4 major downstream signaling cascades including the RAS-RAF-MEK-ERK, PI3 kinase-AKT, PLCgamma-PKC and STATs modules (PubMed:[27153536](#)). May also activate the NF-kappa-B signaling cascade (PubMed:[11116146](#)). Also directly phosphorylates other proteins like RGS16, activating its GTPase activity and probably coupling the EGF receptor signaling to the G protein-coupled receptor signaling (PubMed:[11602604](#)). Also phosphorylates MUC1 and increases its interaction with SRC and CTNNB1/beta-catenin (PubMed:[11483589](#)). Positively regulates cell migration via interaction with CCDC88A/GIV which retains EGFR at the cell membrane following ligand stimulation, promoting EGFR signaling which triggers cell migration (PubMed:[20462955](#)). Plays a role in enhancing learning and memory performance (By similarity). Plays a role in mammalian pain signaling (long-lasting hypersensitivity) (By similarity).

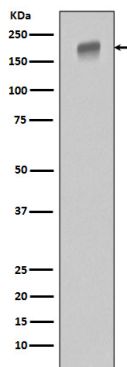
Cellular Location

Cell membrane; Single-pass type I membrane protein. Endoplasmic reticulum membrane; Single-pass type I membrane protein. Golgi apparatus membrane; Single-pass type I membrane protein. Nucleus membrane; Single-pass type I membrane protein Endosome Endosome membrane. Nucleus. Note=In response to EGF, translocated from the cell membrane to the nucleus via Golgi and ER (PubMed:[17909029](#), PubMed:[20674546](#)). Endocytosed upon activation by ligand (PubMed:[17182860](#), PubMed:[17909029](#), PubMed:[27153536](#), PubMed:[2790960](#)). Colocalized with GPER1 in the nucleus of estrogen agonist-induced cancer-associated fibroblasts (CAF) (PubMed:[20551055](#))

Tissue Location

Ubiquitously expressed. Isoform 2 is also expressed in ovarian cancers.

Images



Western blot analysis of EGFR in HeLa cell lysate.

Image not found : 202311/AP90171-IHC.jpg

Immunohistochemical analysis of paraffin-embedded human stomach cancer, using EGFR (ErbB 1) Antibody.

Please note: All products are 'FOR RESEARCH USE ONLY. NOT FOR USE IN DIAGNOSTIC OR THERAPEUTIC PROCEDURES'.