

PTBP2 Antibody

Rabbit mAb

Catalog # AP90140

Product Information

Application	WB, IHC, IF, ICC, IHF
Primary Accession	Q9UKA9
Reactivity	Rat, Human, Mouse
Clonality	Monoclonal
Other Names	brPTB; MIBP; nPTB; Polypyrimidine tract binding protein 2; PTB like protein; PTBP 2Ptpb2; Splicing regulator;
Isotype	Rabbit IgG
Host	Rabbit
Calculated MW	57491

Additional Information

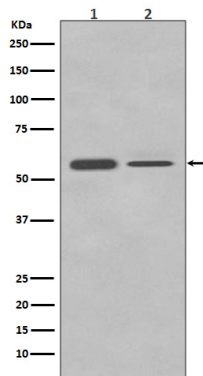
Dilution	WB 1:500~1:2000 IHC 1:50~1:200 ICC/IF 1:50~1:200
Purification	Affinity-chromatography
Immunogen	A synthesized peptide derived from human PTBP2
Description	RNA-binding protein which binds to intronic polypyrimidine tracts and mediates negative regulation of exons splicing. May antagonize in a tissue-specific manner the ability of NOVA1 to activate exon selection. In addition to its function in pre-mRNA splicing, plays also a role in the regulation of translation. Isoform 5 has a reduced affinity for RNA.
Storage Condition and Buffer	Rabbit IgG in phosphate buffered saline , pH 7.4, 150mM NaCl, 0.02% sodium azide and 50% glycerol. Store at +4°C short term. Store at -20°C long term. Avoid freeze / thaw cycle.

Protein Information

Name	PTBP2 (HGNC:17662)
Synonyms	NPTB, PTB, PTBLP
Function	RNA-binding protein which binds to intronic polypyrimidine tracts and mediates negative regulation of exons splicing. May antagonize in a tissue-specific manner the ability of NOVA1 to activate exon selection. In addition to its function in pre-mRNA splicing, plays also a role in the regulation of translation.
Cellular Location	Nucleus {ECO:0000250 UniProtKB:Q91Z31}.
Tissue Location	Mainly expressed in brain although also detected in other tissues like heart and skeletal muscle. Isoform 1 and isoform 2 are specifically expressed in neuronal tissues. Isoform 3 and isoform 4 are expressed in non-neuronal

tissues. Isoform 5 and isoform 6 are truncated forms expressed in non-neuronal tissues

Images



Western blot analysis of PTBP2 in (1) Neuro-2a cell lysate; (2) HeLa cell lysate.

Image not found : 202311/AP90140-IHC.jpg

Immunohistochemical analysis of paraffin-embedded human colon, using PTBP2 Antibody.

Please note: All products are 'FOR RESEARCH USE ONLY. NOT FOR USE IN DIAGNOSTIC OR THERAPEUTIC PROCEDURES'.