

Cytokeratin 18 Antibody

Rabbit mAb

Catalog # AP90095

Product Information

Application	WB, IHC, IF, FC, ICC, IHF
Primary Accession	P05783
Reactivity	Human
Clonality	Monoclonal
Other Names	Keratin-18; CYK18; cytokeratin 18; Cytokeratin-18; K18; K1C18; keratin 18; KRT18; CK-18;
Isotype	Rabbit IgG
Host	Rabbit
Calculated MW	46 KDa

Additional Information

Dilution	WB 1:500~1:2000 IHC 1:50~1:200 ICC/IF 1:50~1:200 FC 1:50
Purification	Affinity-chromatography
Immunogen	A synthesized peptide derived from human Cytokeratin 18
Description	K18 a type I cytoskeletal keratin. The keratins are intermediate filament proteins responsible for the structural integrity of epithelial cells and are subdivided into cytokeratins and hair keratins. Keratin 18 and its filament partner keratin 8 are perhaps the most commonly found members of the intermediate filament gene family.
Storage Condition and Buffer	Rabbit IgG in phosphate buffered saline , pH 7.4, 150mM NaCl, 0.02% sodium azide and 50% glycerol. Store at +4°C short term. Store at -20°C long term. Avoid freeze / thaw cycle.

Protein Information

Images

Western blot analysis of Cytokeratin 18 expression in (1) HT-29 cell lysate;(2) human kidney lysate.

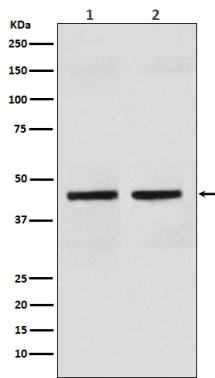


Image not found : 202311/AP90095-IF.jpg

Immunofluorescent analysis of HACAT cells, using Cytokeratin 18 Antibody .

Please note: All products are 'FOR RESEARCH USE ONLY. NOT FOR USE IN DIAGNOSTIC OR THERAPEUTIC PROCEDURES'.