

MKLP1 Antibody

Rabbit mAb

Catalog # AP90070

Product Information

Application	WB, IF, ICC
Primary Accession	Q02241
Reactivity	Rat, Human, Mouse
Clonality	Monoclonal
Other Names	CHO 1;CHO1;KIF 23;KIF23;;KNS L5;KNSL 5;KNSL5;Mitotic kinesin like 1;Mitotic kinesin like protein 1;MKLP 1;
Isotype	Rabbit IgG
Host	Rabbit
Calculated MW	110059

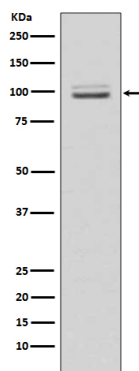
Additional Information

Dilution	WB 1:500~1:2000 ICC/IF 1:50~1:200
Purification	Affinity-chromatography
Immunogen	A synthesized peptide derived from human MKLP1
Description	Plus-end-directed motor enzyme that moves antiparallel microtubules in vitro. Localizes to the interzone of mitotic spindles.
Storage Condition and Buffer	Rabbit IgG in phosphate buffered saline , pH 7.4, 150mM NaCl, 0.02% sodium azide and 50% glycerol. Store at +4°C short term. Store at -20°C long term. Avoid freeze / thaw cycle.

Protein Information

Name	KIF23
Synonyms	KNSL5, MKLP1
Function	Component of the centralspindlin complex that serves as a microtubule-dependent and Rho-mediated signaling required for the myosin contractile ring formation during the cell cycle cytokinesis. Essential for cytokinesis in Rho-mediated signaling. Required for the localization of ECT2 to the central spindle. Plus-end-directed motor enzyme that moves antiparallel microtubules in vitro.
Cellular Location	Nucleus. Cytoplasm, cytoskeleton, spindle. Midbody, Midbody ring. Note=Localizes to the interzone of mitotic spindles. Detected at the midbody during later stages of mitotic cytokinesis
Tissue Location	Widely expressed..

Images



Western blot analysis of MKLP1 expression in HeLa cell lysate.

Please note: All products are 'FOR RESEARCH USE ONLY. NOT FOR USE IN DIAGNOSTIC OR THERAPEUTIC PROCEDURES'.