

# MBP Antibody

Rabbit mAb

Catalog # AP90012

## Product Information

---

<b>Application</b>	WB
<b>Primary Accession</b>	<a href="#">POAEX9</a>
<b>Reactivity</b>	E. coli
<b>Clonality</b>	Monoclonal
<b>Other Names</b>	MalE; malJ; Maltodextrin binding protein; Maltose ABC transporter periplasmic protein; Maltose binding periplasmic protein; MMBP; Periplasmic maltose binding protein;
<b>Isotype</b>	Rabbit IgG
<b>Host</b>	Rabbit
<b>Calculated MW</b>	43388

## Additional Information

---

<b>Dilution</b>	WB 1:1000~1:5000
<b>Purification</b>	Affinity-chromatography
<b>Immunogen</b>	A synthesized peptide
<b>Description</b>	MBP-Tag antibody is part of the Tag series of antibodies, the best quality in the research.
<b>Storage Condition and Buffer</b>	Rabbit IgG in phosphate buffered saline , pH 7.4, 150mM NaCl, 0.02% sodium azide and 50% glycerol. Store at +4°C short term. Store at -20°C long term. Avoid freeze / thaw cycle.

## Protein Information

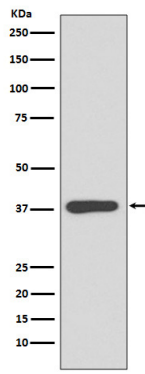
---

<b>Name</b>	malE {ECO:0000303   PubMed:4215651}
<b>Function</b>	Part of the ABC transporter complex MalEFGK involved in maltose/maltodextrin import. Binds maltose and higher maltodextrins such as maltotriose.
<b>Cellular Location</b>	Periplasm.

## Images

---

Western blot analysis of MBP expression in E.coli lysate.



Please note: All products are 'FOR RESEARCH USE ONLY. NOT FOR USE IN DIAGNOSTIC OR THERAPEUTIC PROCEDURES'.