

# INPP4B Antibody (Center)

Affinity Purified Rabbit Polyclonal Antibody (Pab)

Catalog # AP8902c

## Product Information

---

<b>Application</b>	WB, IHC-P, FC, E
<b>Primary Accession</b>	<a href="#">Q15327</a>
<b>Other Accession</b>	<a href="#">Q9QWG5</a> , <a href="#">Q6P1Y8</a> , <a href="#">Q4R4D7</a>
<b>Reactivity</b>	Human, Rat, Mouse
<b>Predicted</b>	Mouse, Rat, Monkey
<b>Host</b>	Rabbit
<b>Clonality</b>	Polyclonal
<b>Isotype</b>	Rabbit IgG
<b>Clone Names</b>	RB22321
<b>Calculated MW</b>	104738
<b>Antigen Region</b>	367-393

## Additional Information

---

<b>Gene ID</b>	8821
<b>Other Names</b>	Type II inositol 3, 4-bisphosphate 4-phosphatase, Inositol polyphosphate 4-phosphatase type II, INPP4B
<b>Target/Specificity</b>	This INPP4B antibody is generated from rabbits immunized with a KLH conjugated synthetic peptide between 367-393 amino acids from the Central region of human INPP4B.
<b>Dilution</b>	WB~~1:500 IHC-P~~1:100~500 FC~~1:10~50 E~~Use at an assay dependent concentration.
<b>Format</b>	Purified polyclonal antibody supplied in PBS with 0.09% (W/V) sodium azide. This antibody is purified through a protein A column, followed by peptide affinity purification.
<b>Storage</b>	Maintain refrigerated at 2-8°C for up to 2 weeks. For long term storage store at -20°C in small aliquots to prevent freeze-thaw cycles.
<b>Precautions</b>	INPP4B Antibody (Center) is for research use only and not for use in diagnostic or therapeutic procedures.

## Protein Information

---

<b>Name</b>	INPP4B
<b>Function</b>	Catalyzes the hydrolysis of the 4-position phosphate of phosphatidylinositol

3,4-bisphosphate, inositol 1,3,4-trisphosphate and inositol 3,4-trisphosphate (PubMed:[24070612](#), PubMed:[24591580](#)). Plays a role in the late stages of macropinocytosis by dephosphorylating phosphatidylinositol 3,4-bisphosphate in membrane ruffles (PubMed:[24591580](#)). The lipid phosphatase activity is critical for tumor suppressor function. Antagonizes the PI3K-AKT/PKB signaling pathway by dephosphorylating phosphoinositides and thereby modulating cell cycle progression and cell survival (PubMed:[19647222](#), PubMed:[24070612](#)).

#### Tissue Location

Widely expressed with highest levels occurring in the skeletal muscle and heart.

## Background

---

INPP4B catalyzes the hydrolysis of the 4-position phosphate of phosphatidylinositol 3,4-bisphosphate, inositol 1,3,4-trisphosphate and inositol 1,4-bisphosphate.

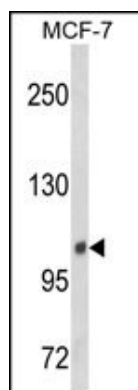
## References

---

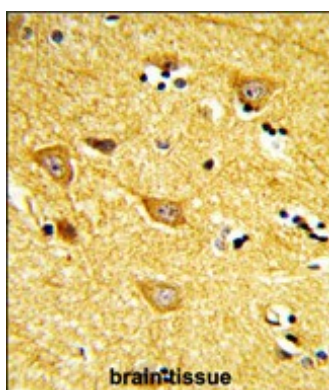
Norris F.A., et.al., J. Biol. Chem. 272:23859-23864(1997).

## Images

---

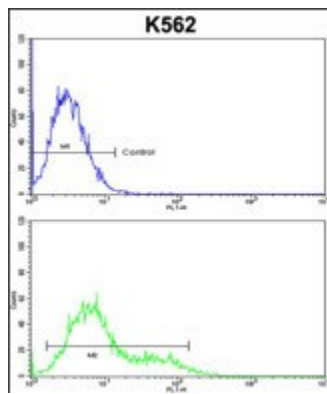


Western blot analysis of INPP4B Antibody (Center) (Cat. #AP8902c) in MCF-7 cell line lysates (35ug/lane). INPP4B (arrow) was detected using the purified Pab.



Formalin-fixed and paraffin-embedded human brain tissue reacted with INPP4B Antibody (Center), which was peroxidase-conjugated to the secondary antibody, followed by DAB staining. This data demonstrates the use of this antibody for immunohistochemistry; clinical relevance has not been evaluated.

INPP4B Antibody (Center) (Cat. #AP8902c) flow cytometric analysis of k562 cells (bottom histogram) compared to a negative control cell (top histogram). FITC-conjugated goat-anti-rabbit secondary antibodies were used for the analysis.



Please note: All products are 'FOR RESEARCH USE ONLY. NOT FOR USE IN DIAGNOSTIC OR THERAPEUTIC PROCEDURES'.