

GPA33 Antibody (C-term)

Affinity Purified Rabbit Polyclonal Antibody (Pab)

Catalog # AP8888B

Product Information

Application	WB, IHC-P, FC, E
Primary Accession	Q99795
Reactivity	Human
Host	Rabbit
Clonality	Polyclonal
Isotype	Rabbit IgG
Clone Names	RB21529
Calculated MW	35632
Antigen Region	264-293

Additional Information

Gene ID	10223
Other Names	Cell surface A33 antigen, Glycoprotein A33, GPA33
Target/Specificity	This GPA33 antibody is generated from rabbits immunized with a KLH conjugated synthetic peptide between 264-293 amino acids from the C-terminal region of human GPA33.
Dilution	WB~~1:1000 IHC-P~~1:100~500 FC~~1:10~50 E~~Use at an assay dependent concentration.
Format	Purified polyclonal antibody supplied in PBS with 0.09% (W/V) sodium azide. This antibody is purified through a protein A column, followed by peptide affinity purification.
Storage	Maintain refrigerated at 2-8°C for up to 2 weeks. For long term storage store at -20°C in small aliquots to prevent freeze-thaw cycles.
Precautions	GPA33 Antibody (C-term) is for research use only and not for use in diagnostic or therapeutic procedures.

Protein Information

Name	GPA33
Function	May play a role in cell-cell recognition and signaling.
Cellular Location	Membrane; Single-pass type I membrane protein.

Tissue Location

Expressed in normal gastrointestinal epithelium and in 95% of colon cancers

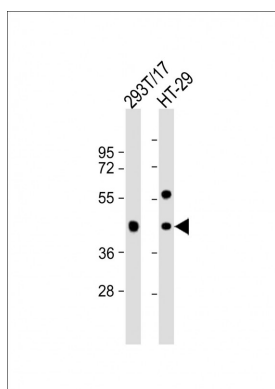
Background

GPA33 is a cell surface antigen that is expressed in greater than 95% of human colon cancers. It may play a role in cell-cell recognition and signaling.

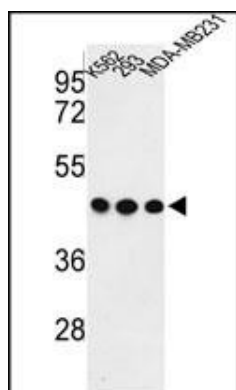
References

Moritz,R.L., et.al., J Chromatogr A 798 (1-2), 91-101 (1998)

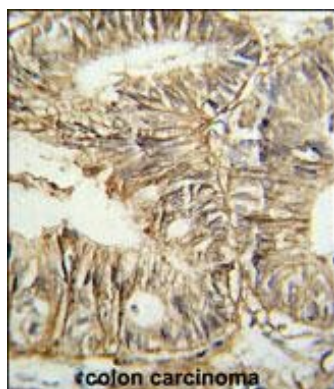
Images



All lanes : Anti-GPA33 Antibody (C-term) at 1:1000 dilution
Lane 1: 293T/17 whole cell lysate Lane 2: HT-29 whole cell lysate
Lysates/proteins at 20 µg per lane. Secondary Goat Anti-Rabbit IgG, (H+L), Peroxidase conjugated at 1/10000 dilution. Predicted band size : 36 kDa
Blocking/Dilution buffer: 5% NFDm/TBST.

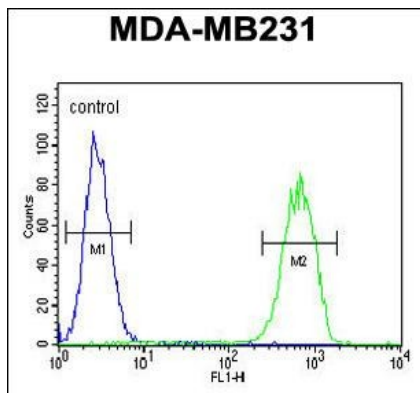


Western blot analysis of GPA33 Antibody (C-term) (Cat. #AP8888b) in K562, 293, MDA-MB231 cell line lysates (35ug/lane). GPA33 (arrow) was detected using the purified Pab.



GPA33 Antibody (C-term) (Cat. #AP8888b) IHC analysis in formalin fixed and paraffin embedded human colon carcinoma followed by peroxidase conjugation of the secondary antibody and DAB staining. This data demonstrates the use of the GPA33 Antibody (C-term) for immunohistochemistry. Clinical relevance has not been evaluated.

GPA33 Antibody (C-term) (Cat. #AP8888b) flow cytometric analysis of MDA-MB231 cells (right histogram) compared to a negative control cell (left histogram). FITC-conjugated goat-anti-rabbit secondary antibodies were used for the analysis.



Please note: All products are 'FOR RESEARCH USE ONLY. NOT FOR USE IN DIAGNOSTIC OR THERAPEUTIC PROCEDURES'.