

# CTHRC1 Antibody (N-term)

Affinity Purified Rabbit Polyclonal Antibody (Pab)  
Catalog # AP8778a

## Product Information

---

<b>Application</b>	IHC-P, WB, FC, E
<b>Primary Accession</b>	<a href="#">Q96CG8</a>
<b>Reactivity</b>	Human
<b>Host</b>	Rabbit
<b>Clonality</b>	Polyclonal
<b>Isotype</b>	Rabbit IgG
<b>Clone Names</b>	RB23573
<b>Calculated MW</b>	26224
<b>Antigen Region</b>	19-46

## Additional Information

---

<b>Gene ID</b>	115908
<b>Other Names</b>	Collagen triple helix repeat-containing protein 1, Protein NMTTC1, CTHRC1
<b>Target/Specificity</b>	This CTHRC1 antibody is generated from rabbits immunized with a KLH conjugated synthetic peptide between 19-46 amino acids from the N-terminal region of human CTHRC1.
<b>Dilution</b>	IHC-P~1:100~500 WB~1:1000 FC~1:10~50 E~Use at an assay dependent concentration.
<b>Format</b>	Purified polyclonal antibody supplied in PBS with 0.09% (W/V) sodium azide. This antibody is purified through a protein A column, followed by peptide affinity purification.
<b>Storage</b>	Maintain refrigerated at 2-8°C for up to 2 weeks. For long term storage store at -20°C in small aliquots to prevent freeze-thaw cycles.
<b>Precautions</b>	CTHRC1 Antibody (N-term) is for research use only and not for use in diagnostic or therapeutic procedures.

## Protein Information

---

<b>Name</b>	CTHRC1
<b>Function</b>	May act as a negative regulator of collagen matrix deposition.
<b>Cellular Location</b>	Secreted, extracellular space, extracellular matrix

## Tissue Location

Isoform 1 is expressed in calcified atherosclerotic plaque and chondrocyte-like cells.

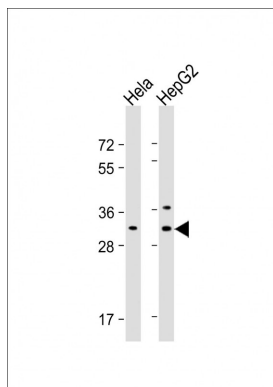
## Background

CTHRC1 may act as a negative regulator of collagen matrix deposition (By similarity).

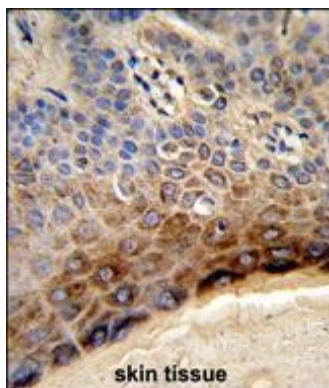
## References

Clark,H.F., et.al., Genome Res. 13 (10), 2265-2270 (2003)

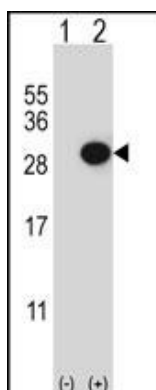
## Images



All lanes : Anti-CTHRC1 Antibody (N-term) at 1:16000 dilution Lane 1: HeLa whole cell lysate Lane 2: HepG2 whole cell lysate Lysates/proteins at 20 µg per lane. Secondary Goat Anti-Rabbit IgG, (H+L), Peroxidase conjugated at 1/10000 dilution. Predicted band size : 26 kDa Blocking/Dilution buffer: 5% NFDM/TBST.

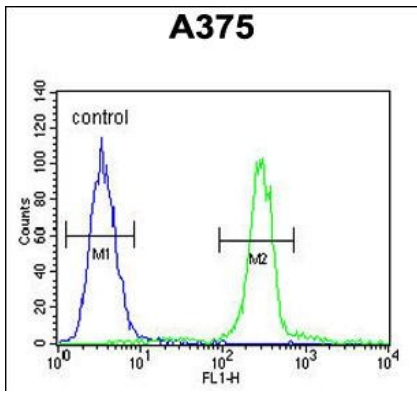


Formalin-fixed and paraffin-embedded human skin tissue reacted with CTHRC1 Antibody (N-term), which was peroxidase-conjugated to the secondary antibody, followed by DAB staining. This data demonstrates the use of this antibody for immunohistochemistry; clinical relevance has not been evaluated.



Western blot analysis of CTHRC1 (arrow) using rabbit polyclonal CTHRC1 Antibody (N-term) (Cat. #AP8778a). 293 cell lysates (2 µg/lane) either nontransfected (Lane 1) or transiently transfected (Lane 2) with the CTHRC1 gene.

CTHRC1 Antibody (N-term) (Cat. #AP8778a) flow cytometric analysis of A375 cells (right histogram) compared to a negative control cell (left histogram). FITC-conjugated goat-anti-rabbit secondary antibodies were used for the analysis.



## Citations

---

- [Collagen triple helix repeat containing-1 promotes pancreatic cancer progression by regulating migration and adhesion of tumor cells.](#)
- [Collagen triple helix repeat containing 1 promotes tumor angiogenesis in gastrointestinal stromal tumors.](#)

Please note: All products are 'FOR RESEARCH USE ONLY. NOT FOR USE IN DIAGNOSTIC OR THERAPEUTIC PROCEDURES'.