

# MC3R Antibody (Center)

Affinity Purified Rabbit Polyclonal Antibody (Pab)

Catalog # AP8719c

## Product Information

---

Application	WB, FC, E
Primary Accession	<a href="#">P41968</a>
Reactivity	Human
Host	Rabbit
Clonality	Polyclonal
Isotype	Rabbit IgG
Clone Names	RB22917
Calculated MW	36043
Antigen Region	86-112

## Additional Information

---

Gene ID	4159
Other Names	Melanocortin receptor 3, MC3-R, MC3R
Target/Specificity	This MC3R antibody is generated from rabbits immunized with a KLH conjugated synthetic peptide between 86-112 amino acids from the Central region of human MC3R.
Dilution	WB~~1:1000 FC~~1:10~50 E~~Use at an assay dependent concentration.
Format	Purified polyclonal antibody supplied in PBS with 0.09% (W/V) sodium azide. This antibody is purified through a protein A column, followed by peptide affinity purification.
Storage	Maintain refrigerated at 2-8°C for up to 2 weeks. For long term storage store at -20°C in small aliquots to prevent freeze-thaw cycles.
Precautions	MC3R Antibody (Center) is for research use only and not for use in diagnostic or therapeutic procedures.

## Protein Information

---

Name	MC3R ( <a href="#">HGNC:6931</a> )
Function	G protein-coupled receptor for melanocyte-stimulating hormones (alpha, beta, and gamma-MSH) and corticotropin/ACTH, which are peptide products of the POMC precursor (PubMed: <a href="#">37524700</a> , PubMed: <a href="#">8463333</a> ). Upon activation, couples to G(s) protein, stimulating adenylate cyclase and the cAMP-dependent signaling pathway, which contributes to the regulation of

energy homeostasis (PubMed:[18231126](#), PubMed:[37524700](#), PubMed:[8463333](#)). Required for expression of anticipatory patterns of activity and wakefulness during periods of limited nutrient availability and for the normal regulation of circadian clock activity in the brain (By similarity). Binding of the Agouti-related protein/AGPR antagonist precludes alpha-MSH-induced signaling, blocking cAMP production (PubMed:[9311920](#)).

**Cellular Location** Cell membrane; Multi-pass membrane protein.

**Tissue Location** Brain, placental, and gut tissues.

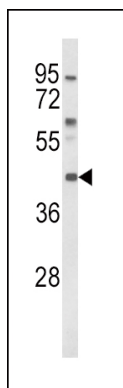
## Background

MC3R is a G-protein-coupled receptor for melanocyte-stimulating hormone and adrenocorticotrophic hormone that is expressed in tissues other than the adrenal cortex and melanocytes. This gene maps to the same region as the locus for benign neonatal epilepsy.

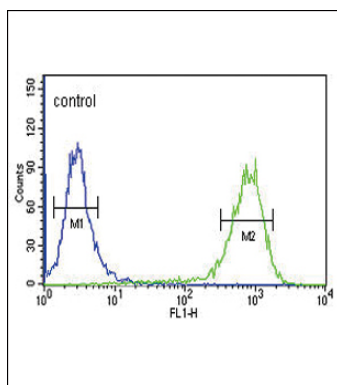
## References

Magenis,R.E.,et.al., Mamm. Genome 5 (8), 503-508 (1994)  
Konda,Y., et.al., J. Biol. Chem. 269 (18), 13162-13166 (1994)

## Images



Western blot analysis of MC3R Antibody (Center) (Cat. #AP8719c) in K562 cell line lysates (35ug/lane). MC3R (arrow) was detected using the purified Pab.



MC3R Antibody (Center) (Cat. #AP8719c) flow cytometric analysis of K562 cells (right histogram) compared to a negative control cell (left histogram).FITC-conjugated goat-anti-rabbit secondary antibodies were used for the analysis.

Please note: All products are 'FOR RESEARCH USE ONLY. NOT FOR USE IN DIAGNOSTIC OR THERAPEUTIC PROCEDURES'.