

KLC1 Antibody (Center)

Affinity Purified Rabbit Polyclonal Antibody (Pab)

Catalog # AP8637c

Product Information

Application	IHC-P, FC, WB, E
Primary Accession	Q07866
Other Accession	P37285
Reactivity	Human, Rat
Predicted	Rat
Host	Rabbit
Clonality	Polyclonal
Isotype	Rabbit IgG
Calculated MW	65310
Antigen Region	389-415

Additional Information

Gene ID	3831
Other Names	Kinesin light chain 1, KLC 1, KLC1, KLC, KNS2
Target/Specificity	This KLC1 antibody is generated from rabbits immunized with a KLH conjugated synthetic peptide between 389-415 amino acids from the Central region of human KLC1.
Dilution	IHC-P~~1:100 FC~~1:10~50 WB~~1:1000 E~~Use at an assay dependent concentration.
Format	Purified polyclonal antibody supplied in PBS with 0.09% (W/V) sodium azide. This antibody is purified through a protein A column, followed by peptide affinity purification.
Storage	Maintain refrigerated at 2-8°C for up to 2 weeks. For long term storage store at -20°C in small aliquots to prevent freeze-thaw cycles.
Precautions	KLC1 Antibody (Center) is for research use only and not for use in diagnostic or therapeutic procedures.

Protein Information

Name	KLC1
Synonyms	KLC, KNS2
Function	Kinesin is a microtubule-associated force-producing protein that may play a

role in organelle transport (PubMed:[21385839](#)). The light chain may function in coupling of cargo to the heavy chain or in the modulation of its ATPase activity (By similarity).

Cellular Location

Cell projection, growth cone {ECO:0000250|UniProtKB:P37285}. Cytoplasmic vesicle. Cytoplasm, cytoskeleton

Tissue Location

Found in a variety of tissues. Mostly abundant in brain and spine.

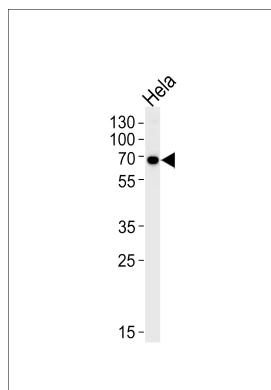
Background

Kinesin is a microtubule-associated force-producing protein that may play a role in organelle transport. The light chain may function in coupling of cargo to the heavy chain or in the modulation of its ATPase activity.

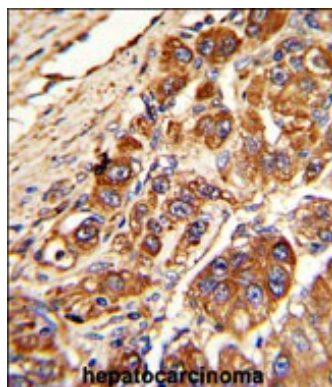
References

Chernajovsky,Y., et.al., DNA Cell Biol. 15 (11), 965-974 (1996) Gyoeva,F.K., et.al., J. Cell. Sci. 113 (PT 11), 2047-2054 (2000)

Images

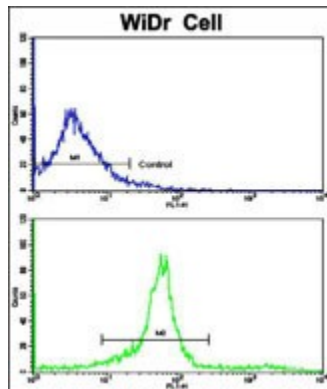
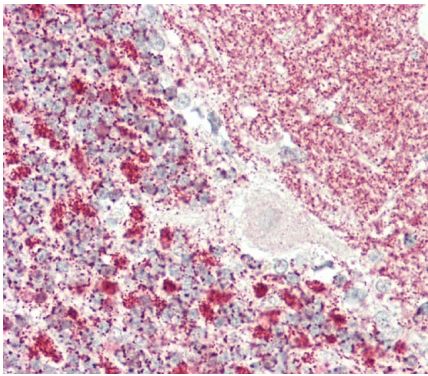


KLC1 Antibody (Center) (Cat. #AP8637c) western blot analysis in HeLa cell line lysates (35ug/lane). This demonstrates the KLC1 antibody detected the KLC1 protein (arrow).



Formalin-fixed and paraffin-embedded human hepatocarcinoma with KLC1 Antibody (Center), which was peroxidase-conjugated to the secondary antibody, followed by DAB staining. This data demonstrates the use of this antibody for immunohistochemistry; clinical relevance has not been evaluated.

Formalin-fixed and paraffin-embedded H.brain, H.cerebellum tissue reacted with KLC1 Antibody (Center) (Cat#AP8637c).



Flow cytometric analysis of widr cells using KLC1 Antibody (Center)(bottom histogram) compared to a negative control cell (top histogram). FITC-conjugated goat-anti-rabbit secondary antibodies were used for the analysis.

Citations

- [Alterations in axonal transport motor proteins in sporadic and experimental Parkinson's disease.](#)

Please note: All products are 'FOR RESEARCH USE ONLY. NOT FOR USE IN DIAGNOSTIC OR THERAPEUTIC PROCEDURES'.