

YWHAB Antibody (N-term)

Purified Rabbit Polyclonal Antibody (Pab)
Catalog # AP8155a

Product Information

Application	WB, IHC-P, E
Primary Accession	P31946
Other Accession	P35213 , Q9CQV8 , Q4R572 , P68250
Reactivity	Human
Predicted	Bovine, Monkey, Mouse, Rat
Host	Rabbit
Clonality	Polyclonal
Isotype	Rabbit IgG
Antigen Region	56-85

Additional Information

Other Names	14-3-3 protein beta/alpha, Protein 1054, Protein kinase C inhibitor protein 1, KCIP-1, 14-3-3 protein beta/alpha, N-terminally processed, YWHAB
Target/Specificity	This YWHAB antibody is generated from rabbits immunized with a KLH conjugated synthetic peptide between 56-85 amino acids from the N-terminal region of human YWHAB.
Dilution	WB~~1:1000 IHC-P~~1:100~500 E~~Use at an assay dependent concentration.
Format	Purified polyclonal antibody supplied in PBS with 0.09% (W/V) sodium azide. This antibody is prepared by Saturated Ammonium Sulfate (SAS) precipitation followed by dialysis against PBS.
Storage	Maintain refrigerated at 2-8°C for up to 2 weeks. For long term storage store at -20°C in small aliquots to prevent freeze-thaw cycles.
Precautions	YWHAB Antibody (N-term) is for research use only and not for use in diagnostic or therapeutic procedures.

Protein Information

Background

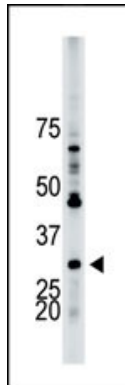
YWHAB belongs to the 14-3-3 family of proteins, members of which mediate signal transduction by binding to phosphoserine-containing proteins. This highly conserved protein family is found in both plants and mammals. The encoded protein has been shown to interact with RAF1 and CDC25 phosphatases, suggesting that it may play a role in linking mitogenic signaling and the cell cycle machinery. Two transcript variants differing in the 5' UTR, but encoding the same protein, have been identified for the gene. Both variants

encode the same protein, however, they are differentially expressed in hematopoietic cells.

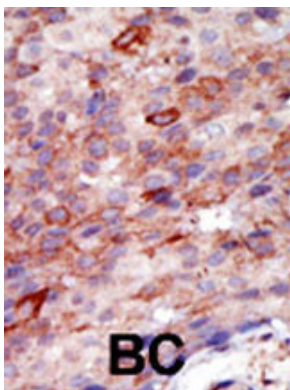
References

- Komori, T., et al., *Acta Neuropathol.* 106(1):66-70 (2003).
Cavet, M.E., et al., *J. Biol. Chem.* 278(20):18376-18383 (2003).
Li, Y., et al., *J. Biol. Chem.* 278(16):13663-13671 (2003).
Shumway, S.D., et al., *J. Biol. Chem.* 278(4):2089-2092 (2003).
Parvaresh, S., et al., *FEBS Lett.* 532(3):357-362 (2002).

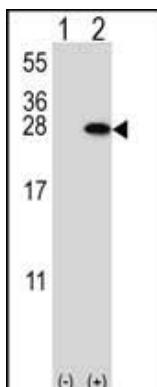
Images



The anti-YWHAB Pab (Cat. #AP8155a) is used in Western blot to detect YWHAB in HL-60 cell lysate.



Formalin-fixed and paraffin-embedded human cancer tissue reacted with the primary antibody, which was peroxidase-conjugated to the secondary antibody, followed by DAB staining. This data demonstrates the use of this antibody for immunohistochemistry; clinical relevance has not been evaluated. BC = breast carcinoma; HC = hepatocarcinoma.



Western blot analysis of YWHAB (arrow) using rabbit polyclonal YWHAB Antibody (T71) (Cat. #AP8155a). 293 cell lysates (2 ug/lane) either nontransfected (Lane 1) or transiently transfected (Lane 2) with the YWHAB gene.

Citations

- [Effects of triterpenes from *Ganoderma lucidum* on protein expression profile of HeLa cells.](#)
- [BSCL2/seipin regulates adipogenesis through actin cytoskeleton remodelling.](#)
- [14-3-3 \$\beta\$ Promotes Migration and Invasion of Human Hepatocellular Carcinoma Cells by Modulating Expression of MMP2 and MMP9 through PI3K/Akt/NF- \$\kappa\$ B Pathway.](#)

Please note: All products are 'FOR RESEARCH USE ONLY. NOT FOR USE IN DIAGNOSTIC OR THERAPEUTIC PROCEDURES'.