

NM23 (NME1) Antibody (N-term)

Purified Rabbit Polyclonal Antibody (Pab)

Catalog # AP8080a

Product Information

Application	WB, IF, IHC-P, E
Primary Accession	P15531
Reactivity	Human
Host	Rabbit
Clonality	Polyclonal
Isotype	Rabbit IgG
Clone Names	RB03726
Antigen Region	25-54

Additional Information

Other Names	Nucleoside diphosphate kinase A, NDK A, NDP kinase A, Granzyme A-activated DNase, GAAD, Metastasis inhibition factor nm23, NM23-H1, Tumor metastatic process-associated protein, NME1, NDPKA, NM23
Target/Specificity	This NM23 (NME1) antibody is generated from rabbits immunized with a KLH conjugated synthetic peptide between 25-54 amino acids from the N-terminal region of human NM23 (NME1).
Dilution	WB~~1:1000 IF~~1:10~50 IHC-P~~1:100~500 E~~Use at an assay dependent concentration.
Format	Purified polyclonal antibody supplied in PBS with 0.09% (W/V) sodium azide. This antibody is prepared by Saturated Ammonium Sulfate (SAS) precipitation followed by dialysis against PBS.
Storage	Maintain refrigerated at 2-8°C for up to 2 weeks. For long term storage store at -20°C in small aliquots to prevent freeze-thaw cycles.
Precautions	NM23 (NME1) Antibody (N-term) is for research use only and not for use in diagnostic or therapeutic procedures.

Protein Information

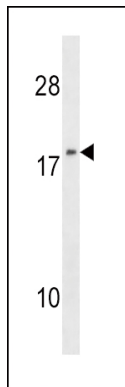
Background

NME1 was identified because of its reduced mRNA transcript levels in highly metastatic cells. NME1 encodes the 'A' isoform of nucleoside diphosphate kinase (NDK). NDK exists as a hexamer composed of the 'A' (NME1) and 'B' (encoded by NME2) isoforms. Mutations in NME1 have been identified in aggressive neuroblastomas.

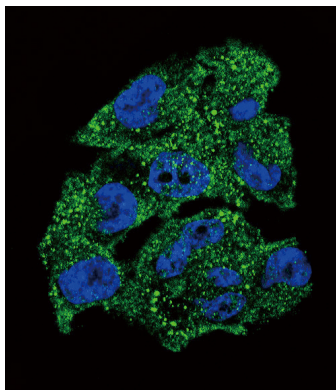
References

- Munier, A., et al., *Exp. Cell Res.* 289(2):295-306 (2003).
Chen, Y., et al., *J. Mol. Biol.* 332(4):915-926 (2003).
Kim, Y.I., et al., *Biochem. Biophys. Res. Commun.* 307(2):281-289 (2003).
Wang, P.H., et al., *Gynecol. Obstet. Invest.* 55(1):14-19 (2003).
Ni, X., et al., *J. Hum. Genet.* 48(2):96-100 (2003).

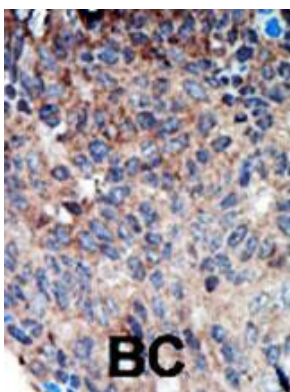
Images



NME1 Antibody (F40) (Cat. #AP8080a) western blot analysis in 293 cell line lysates (35ug/lane). This demonstrates the NME1 antibody detected the NME1 protein (arrow).



Confocal immunofluorescent analysis of A375 (NME1) cells with NME1 Antibody (N-term) (Cat#AP8080a) followed by Alexa Fluor 488-conjugated goat anti-rabbit IgG (green). DAPI was used to stain the cell nuclear (blue).



Formalin-fixed and paraffin-embedded human cancer tissue reacted with the primary antibody, which was peroxidase-conjugated to the secondary antibody, followed by DAB staining. This data demonstrates the use of this antibody for immunohistochemistry; clinical relevance has not been evaluated. BC = breast carcinoma; HC = hepatocarcinoma.

Please note: All products are 'FOR RESEARCH USE ONLY. NOT FOR USE IN DIAGNOSTIC OR THERAPEUTIC PROCEDURES'.