

# Endophilin B1 Antibody (Y80)

Affinity Purified Rabbit Polyclonal Antibody (Pab)

Catalog # AP8034a

## Product Information

---

<b>Application</b>	WB, IHC-P, E
<b>Primary Accession</b>	<a href="#">Q9Y371</a>
<b>Other Accession</b>	<a href="#">Q6AYE2</a> , <a href="#">Q9JK48</a> , <a href="#">Q32LM0</a>
<b>Reactivity</b>	Human
<b>Predicted</b>	Mouse, Rat, Bovine
<b>Host</b>	Rabbit
<b>Clonality</b>	Polyclonal
<b>Isotype</b>	Rabbit IgG
<b>Clone Names</b>	RB15350
<b>Calculated MW</b>	40796
<b>Antigen Region</b>	59-86

## Additional Information

---

<b>Gene ID</b>	51100
<b>Other Names</b>	Endophilin-B1, Bax-interacting factor 1, Bif-1, SH3 domain-containing GRB2-like protein B1, SH3GLB1, KIAA0491
<b>Target/Specificity</b>	This Endophilin B1 antibody is generated from rabbits immunized with a KLH conjugated synthetic peptide between 59-86 amino acids from human Endophilin B1.
<b>Dilution</b>	WB~~1:1000 IHC-P~~1:100~500 E~~Use at an assay dependent concentration.
<b>Format</b>	Purified polyclonal antibody supplied in PBS with 0.05% (V/V) Proclin 300. This antibody is purified through a protein A column, followed by peptide affinity purification.
<b>Storage</b>	Maintain refrigerated at 2-8°C for up to 2 weeks. For long term storage store at -20°C in small aliquots to prevent freeze-thaw cycles.
<b>Precautions</b>	Endophilin B1 Antibody (Y80) is for research use only and not for use in diagnostic or therapeutic procedures.

## Protein Information

---

<b>Name</b>	SH3GLB1
<b>Synonyms</b>	KIAA0491

<b>Function</b>	May be required for normal outer mitochondrial membrane dynamics (PubMed: <a href="#">15452144</a> ). Required for coatomer-mediated retrograde transport in certain cells (By similarity). May recruit other proteins to membranes with high curvature. May promote membrane fusion (PubMed: <a href="#">11604418</a> ). Involved in activation of caspase-dependent apoptosis by promoting BAX/BAK1 activation (PubMed: <a href="#">16227588</a> ). Isoform 1 acts proapoptotic in fibroblasts (By similarity). Involved in caspase- independent apoptosis during nutrition starvation and involved in the regulation of autophagy. Activates lipid kinase activity of PIK3C3 during autophagy probably by associating with the PI3K complex II (PI3KC3-C2) (PubMed: <a href="#">17891140</a> ). Associated with PI3KC3-C2 during autophagy may regulate the trafficking of ATG9A from the Golgi complex to the peripheral cytoplasm for the formation of autophagosomes by inducing Golgi membrane tubulation and fragmentation (PubMed: <a href="#">21068542</a> ). Involved in regulation of degradative endocytic trafficking and cytokinesis, probably in the context of PI3KC3-C2 (PubMed: <a href="#">20643123</a> ). Isoform 2 acts antiapoptotic in neuronal cells; involved in maintenance of mitochondrial morphology and promotes neuronal viability (By similarity).
<b>Cellular Location</b>	Cytoplasm. Golgi apparatus membrane; Peripheral membrane protein. Mitochondrion outer membrane; Peripheral membrane protein. Cytoplasmic vesicle, autophagosome membrane. Midbody. Note=Association with the Golgi apparatus depends on the cell type (By similarity). Following starvation colocalizes with ATG5 and LC3 autophagy-related protein(s) on autophagosomal membranes (PubMed:17891140). {ECO:0000250, ECO:0000269   PubMed:17891140}
<b>Tissue Location</b>	Highly expressed in heart, skeletal muscle, kidney and placenta. Detected at lower levels in brain, colon, thymus, spleen, liver, small intestine, lung and peripheral blood leukocytes

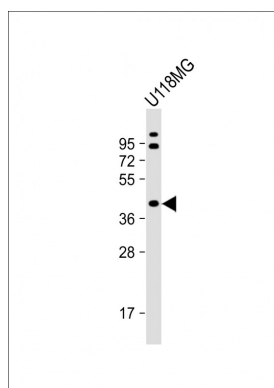
## Background

Endophilin B1 may be required for normal outer mitochondrial membrane dynamics. It is required for coatomer-mediated retrograde transport in certain cells. It may recruit other proteins to membranes with high curvature and may promote membrane fusion.

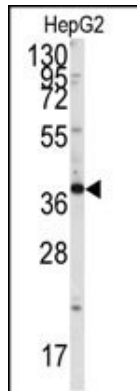
## References

Yamaguchi,H., J. Biol. Chem. 283 (27), 19112-19118 (2008)  
Lee,J.W., Pathology 38 (4), 312-315 (2006)  
Masuda,M., EMBO J. 25 (12), 2889-2897 (2006)

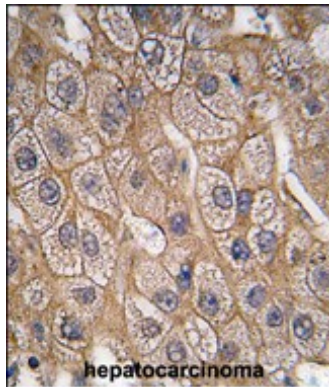
## Images



Anti-Endophilin Antibody (Y80) at 1:1000 dilution + U118MG whole cell lysate Lysates/proteins at 20 µg per lane. Secondary Goat Anti-Rabbit IgG, (H+L), Peroxidase conjugated at 1/10000 dilution. Predicted band size : 41 kDa Blocking/Dilution buffer: 5% NFDm/TBST.



Western blot analysis of anti-Endophilin B1 Antibody (Y80) (Cat.#AP8034a) in HepG2 cell line lysates (35ug/lane). SH3GLB1 (arrow) was detected using the purified Pab.



Formalin-fixed and paraffin-embedded human hepatocarcinoma tissue reacted with Endophilin B1 Antibody (Y80) (Cat.#AP8034a), which was peroxidase-conjugated to the secondary antibody, followed by DAB staining. This data demonstrates the use of this antibody for immunohistochemistry; clinical relevance has not been evaluated.

Please note: All products are 'FOR RESEARCH USE ONLY. NOT FOR USE IN DIAGNOSTIC OR THERAPEUTIC PROCEDURES'.