

# p70 S6Kbeta Antibody (C-term)

Purified Rabbit Polyclonal Antibody (Pab)

Catalog # AP8009a

## Product Information

---

<b>Application</b>	WB, E
<b>Primary Accession</b>	<a href="#">Q9UBS0</a>
<b>Reactivity</b>	Human
<b>Host</b>	Rabbit
<b>Clonality</b>	Polyclonal
<b>Isotype</b>	Rabbit IgG
<b>Antigen Region</b>	452-482

## Additional Information

---

<b>Other Names</b>	Ribosomal protein S6 kinase beta-2, S6K-beta-2, S6K2, 70 kDa ribosomal protein S6 kinase 2, P70S6K2, p70-S6K 2, S6 kinase-related kinase, SRK, Serine/threonine-protein kinase 14B, p70 ribosomal S6 kinase beta, S6K-beta, p70 S6 kinase beta, p70 S6K-beta, p70 S6KB, p70-beta, RPS6KB2, STK14B
<b>Target/Specificity</b>	This p70 S6Kbeta antibody is generated from rabbits immunized with a KLH conjugated synthetic peptide between 452-482 amino acids from the C-terminal region of human p70 S6Kbeta.
<b>Dilution</b>	WB~~1:1000 E~~Use at an assay dependent concentration.
<b>Format</b>	Purified polyclonal antibody supplied in PBS with 0.09% (W/V) sodium azide. This antibody is prepared by Saturated Ammonium Sulfate (SAS) precipitation followed by dialysis against PBS.
<b>Storage</b>	Maintain refrigerated at 2-8°C for up to 2 weeks. For long term storage store at -20°C in small aliquots to prevent freeze-thaw cycles.
<b>Precautions</b>	p70 S6Kbeta Antibody (C-term) is for research use only and not for use in diagnostic or therapeutic procedures.

## Protein Information

---

### Background

---

This gene encodes a member of the RSK (ribosomal S6 kinase) family of serine/threonine kinases. This kinase contains 2 nonidentical kinase catalytic domains and phosphorylates the S6 ribosomal protein and eucaryotic translation initiation factor 4B. Phosphorylation of S6 leads to an increase in protein synthesis and cell proliferation.

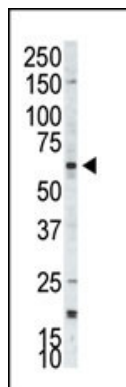
## References

---

Strausberg, R.L., et al., Proc. Natl. Acad. Sci. U.S.A. 99(26):16899-16903 (2002).  
Lee-Fruman, K.K., et al., Oncogene 18(36):5108-5114 (1999).  
Saitoh, M., et al., Biochem. Biophys. Res. Commun. 253(2):470-476 (1998).  
Gout, I., et al., J. Biol. Chem. 273(46):30061-30064 (1998).

## Images

---



Western blot analysis of anti-p70S6Kbeta Pab (Cat. #AP8009a) in A375 cell lysate. p70S6Kbeta (arrow) was detected using purified Pab. Secondary HRP-anti-rabbit was used for signal visualization with chemiluminescence.

## Citations

---

- [S6 kinase 2 potentiates interleukin-3-driven cell proliferation.](#)
- [Regulatory effects of SKAR in interferon  \$\alpha\$  signaling and its role in the generation of type I IFN responses.](#)
- [The Class I PI3K inhibitor S14161 induces autophagy in malignant blood cells by modulating the Beclin 1/Vps34 complex.](#)

Please note: All products are 'FOR RESEARCH USE ONLY. NOT FOR USE IN DIAGNOSTIC OR THERAPEUTIC PROCEDURES'.