

KLC1 Rabbit mAb

Catalog # AP79052

Product Information

Application	WB, IHC-P, IF, FC, ICC, IP
Primary Accession	Q07866
Reactivity	Rat, Human, Mouse
Host	Rabbit
Clonality	Monoclonal Antibody
Isotype	IgG
Conjugate	Unconjugated
Immunogen	A synthesized peptide derived from human KLC1
Purification	Affinity Purified
Calculated MW	65310

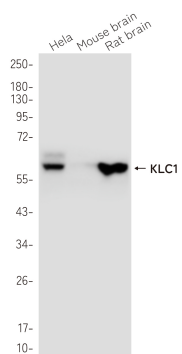
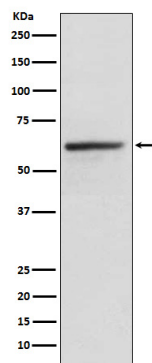
Additional Information

Gene ID	3831
Other Names	KLC1
Dilution	WB~~1/500-1/1000 IHC-P~~N/A IF~~1:50~200 FC~~1:10~50 ICC~~N/A IP~~N/A
Format	Liquid in 10mM PBS, pH 7.4, 150mM sodium chloride, 0.05% BSA, 0.02% sodium azide and 50% glycerol.
Storage	Store at 4°C short term. Aliquot and store at -20°C long term. Avoid freeze/thaw cycles.

Protein Information

Name	KLC1
Synonyms	KLC, KNS2
Function	Kinesin is a microtubule-associated force-producing protein that may play a role in organelle transport (PubMed: 21385839). The light chain may function in coupling of cargo to the heavy chain or in the modulation of its ATPase activity (By similarity).
Cellular Location	Cell projection, growth cone {ECO:0000250 UniProtKB:P37285}. Cytoplasmic vesicle. Cytoplasm, cytoskeleton
Tissue Location	Found in a variety of tissues. Mostly abundant in brain and spine.

Images



Please note: All products are 'FOR RESEARCH USE ONLY. NOT FOR USE IN DIAGNOSTIC OR THERAPEUTIC PROCEDURES'.