

Cytochrome P450 2E1 Rabbit mAb

Catalog # AP79033

Product Information

Application	WB
Primary Accession	P05181
Reactivity	Rat, Human, Mouse
Host	Rabbit
Clonality	Monoclonal Antibody
Isotype	IgG
Conjugate	Unconjugated
Immunogen	A synthesized peptide derived from human CYP2E1
Purification	Affinity Chromatography
Calculated MW	56849

Additional Information

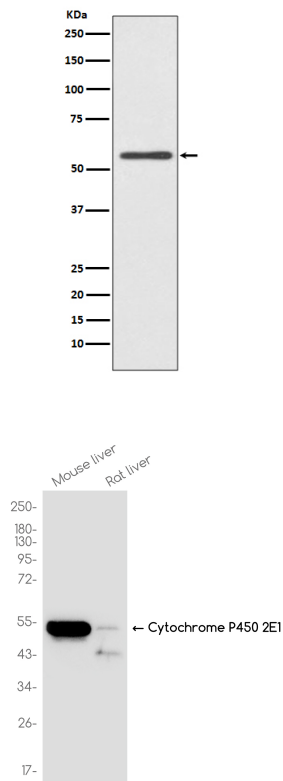
Gene ID	1571
Other Names	CYP2E1
Dilution	WB~~1/500-1/1000
Format	Liquid in 10mM PBS, pH 7.4, 150mM sodium chloride, 0.05% BSA, 0.02% sodium azide and 50% glycerol.
Storage	Store at 4°C short term. Aliquot and store at -20°C long term. Avoid freeze/thaw cycles.

Protein Information

Name	CYP2E1 {ECO:0000303 PubMed:10553002, ECO:0000312 HGNC:HGNC:2631}
Function	A cytochrome P450 monooxygenase involved in the metabolism of fatty acids (PubMed: 10553002 , PubMed: 18577768). Mechanistically, uses molecular oxygen inserting one oxygen atom into a substrate, and reducing the second into a water molecule, with two electrons provided by NADPH via cytochrome P450 reductase (NADPH--hemoprotein reductase) (PubMed: 10553002 , PubMed: 18577768). Catalyzes the hydroxylation of carbon-hydrogen bonds. Hydroxylates fatty acids specifically at the omega-1 position displaying the highest catalytic activity for saturated fatty acids (PubMed: 10553002 , PubMed: 18577768). May be involved in the oxidative metabolism of xenobiotics (Probable).
Cellular Location	Endoplasmic reticulum membrane {ECO:0000250 UniProtKB:P05182}; Peripheral membrane protein {ECO:0000250 UniProtKB:P05182}. Mitochondrial membrane {ECO:0000250 UniProtKB:P05182}; Peripheral membrane protein

{ECO:0000250|UniProtKB:P05182}. Mitochondrion inner membrane
{ECO:0000250|UniProtKB:P05182}; Peripheral membrane protein
{ECO:0000250|UniProtKB:P05182}. Note=Post-translationally targeted to
mitochondria. TOMM70 is required for the translocation across the
mitochondrial outer membrane. After translocation into the matrix,
associates with the inner membrane as a membrane extrinsic protein
{ECO:0000250|UniProtKB:P05182}

Images



Please note: All products are 'FOR RESEARCH USE ONLY. NOT FOR USE IN DIAGNOSTIC OR THERAPEUTIC PROCEDURES'.