

CD20 Rabbit mAb

Catalog # AP79020

Product Information

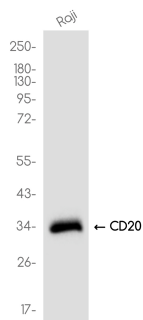
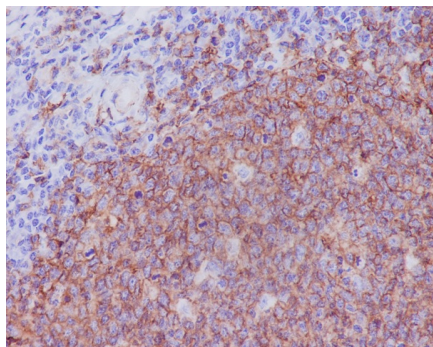
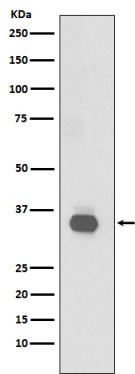
Application	WB, IHC-P, FC
Primary Accession	P11836
Reactivity	Human
Host	Rabbit
Clonality	Monoclonal Antibody
Isotype	IgG
Conjugate	Unconjugated
Immunogen	A synthesized peptide derived from human CD20
Purification	Affinity Chromatography
Calculated MW	33077

Additional Information

Gene ID	931
Other Names	MS4A1
Dilution	WB~~1/500-1/1000 IHC-P~~N/A FC~~1/50-1/100
Format	Liquid in 10mM PBS, pH 7.4, 150mM sodium chloride, 0.05% BSA, 0.02% sodium azide and 50% glycerol.
Storage	Store at 4°C short term. Aliquot and store at -20°C long term. Avoid freeze/thaw cycles.

Protein Information

Name	MS4A1
Synonyms	CD20
Function	B-lymphocyte-specific membrane protein that plays a role in the regulation of cellular calcium influx necessary for the development, differentiation, and activation of B-lymphocytes (PubMed: 12920111 , PubMed: 3925015 , PubMed: 7684739). Functions as a store-operated calcium (SOC) channel component promoting calcium influx after activation by the B-cell receptor/BCR (PubMed: 12920111 , PubMed: 18474602 , PubMed: 7684739).
Cellular Location	Cell membrane; Multi-pass membrane protein. Cell membrane; Lipid-anchor. Note=Constitutively associated with membrane rafts.
Tissue Location	Expressed on B-cells.



Please note: All products are 'FOR RESEARCH USE ONLY. NOT FOR USE IN DIAGNOSTIC OR THERAPEUTIC PROCEDURES'.