

ILF2 Rabbit mAb

Catalog # AP79015

Product Information

Application	WB, IHC-P, FC, IP
Primary Accession	Q12905
Reactivity	Rat, Human, Mouse
Host	Rabbit
Clonality	Monoclonal Antibody
Isotype	IgG
Conjugate	Unconjugated
Immunogen	A synthesized peptide derived from human ILF2
Purification	Affinity Chromatography
Calculated MW	43062

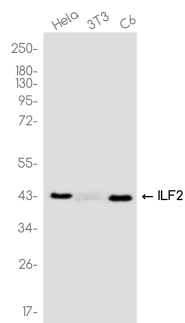
Additional Information

Gene ID	3608
Other Names	ILF2
Dilution	WB~~1/500-1/1000 IHC-P~~N/A FC~~1:10~50 IP~~N/A
Format	Liquid in 10mM PBS, pH 7.4, 150mM sodium chloride, 0.05% BSA, 0.02% sodium azide and 50% glycerol.
Storage	Store at 4°C short term. Aliquot and store at -20°C long term. Avoid freeze/thaw cycles.

Protein Information

Name	ILF2
Synonyms	NF45
Function	Chromatin-interacting protein that forms a stable heterodimer with interleukin enhancer-binding factor 3/ILF3 and plays a role in several biological processes including transcription, innate immunity or cell growth (PubMed: 18458058 , PubMed: 31212927). Essential for the efficient reshuttling of ILF3 (isoform 1 and isoform 2) into the nucleus. Together with ILF3, forms an RNA-binding complex that is required for mitotic progression and cytokinesis by regulating the expression of a cluster of mitotic genes. Mechanistically, competes with STAU1/STAU2-mediated mRNA decay (PubMed: 32433969). Also plays a role in the inhibition of various viruses including Japanese encephalitis virus or enterovirus 71.
Cellular Location	Nucleus, nucleolus. Cytoplasm. Nucleus. Note=Localized in cytoplasmic mRNP

Images



Please note: All products are 'FOR RESEARCH USE ONLY. NOT FOR USE IN DIAGNOSTIC OR THERAPEUTIC PROCEDURES'.