

MIF Rabbit mAb

Catalog # AP79000

Product Information

Application	WB, FC, IP
Primary Accession	P14174
Reactivity	Rat, Human, Mouse
Host	Rabbit
Clonality	Monoclonal Antibody
Isotype	IgG
Conjugate	Unconjugated
Immunogen	A synthesized peptide derived from human MIF
Purification	Affinity Chromatography
Calculated MW	12476

Additional Information

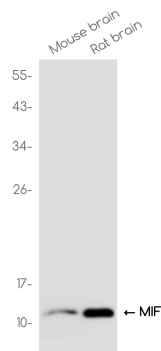
Gene ID	4282
Other Names	MIF
Dilution	WB~~1/500-1/1000 FC~~1:10~50 IP~~N/A
Format	Liquid in 10mM PBS, pH 7.4, 150mM sodium chloride, 0.05% BSA, 0.02% sodium azide and 50% glycerol.
Storage	Store at 4°C short term. Aliquot and store at -20°C long term. Avoid freeze/thaw cycles.

Protein Information

Name	MIF {ECO:0000303 PubMed:2552447, ECO:0000312 HGNC:HGNC:7097}
Function	Pro-inflammatory cytokine involved in the innate immune response to bacterial pathogens (PubMed: 15908412 , PubMed: 17443469 , PubMed: 23776208). The expression of MIF at sites of inflammation suggests a role as mediator in regulating the function of macrophages in host defense (PubMed: 15908412 , PubMed: 17443469 , PubMed: 23776208). Counteracts the anti-inflammatory activity of glucocorticoids (PubMed: 15908412 , PubMed: 17443469 , PubMed: 23776208). Has phenylpyruvate tautomerase and dopachrome tautomerase activity (in vitro), but the physiological substrate is not known (PubMed: 11439086 , PubMed: 17526494). It is not clear whether the tautomerase activity has any physiological relevance, and whether it is important for cytokine activity (PubMed: 11439086 , PubMed: 17526494).
Cellular Location	Secreted. Cytoplasm. Note=Does not have a cleavable signal sequence and is secreted via a specialized, non-classical pathway Secreted by macrophages

upon stimulation by bacterial lipopolysaccharide (LPS), or by M.tuberculosis antigens

Images



Please note: All products are 'FOR RESEARCH USE ONLY. NOT FOR USE IN DIAGNOSTIC OR THERAPEUTIC PROCEDURES'.