

NOX2 Rabbit mAb

Catalog # AP78974

Product Information

Application	WB
Primary Accession	P04839
Reactivity	Rat, Human, Mouse
Host	Rabbit
Clonality	Monoclonal Antibody
Isotype	IgG
Conjugate	Unconjugated
Immunogen	A synthesized peptide derived from human CYBB
Purification	Affinity Chromatography
Calculated MW	65336

Additional Information

Gene ID	1536
Other Names	CYBB
Dilution	WB~~1/500-1/1000
Format	Liquid in 10mM PBS, pH 7.4, 150mM sodium chloride, 0.05% BSA, 0.02% sodium azide and 50% glycerol.
Storage	Store at 4°C short term. Aliquot and store at -20°C long term. Avoid freeze/thaw cycles.

Protein Information

Name	CYBB (HGNC:2578)
Synonyms	NOX2
Function	Catalytic subunit of the phagocyte NADPH oxidase complex that mediates the transfer of electrons from cytosolic NADPH to O ₂ to produce the superoxide anion (O ₂ ⁻) (PubMed: 15338276 , PubMed: 36241643 , PubMed: 36413210 , PubMed: 38355798). In the activated complex, electrons are first transferred from NADPH to flavin adenine dinucleotide (FAD) and subsequently transferred via two heme molecules to molecular oxygen, producing superoxide through an outer-sphere reaction (Probable) (PubMed: 38355798). Activation of the NADPH oxidase complex is initiated by the assembly of cytosolic subunits of the NADPH oxidase complex with the core NADPH oxidase complex to form a complex at the plasma membrane or phagosomal membrane (PubMed: 19028840 , PubMed: 38355798). This activation process is initiated by phosphorylation dependent binding of the

cytosolic NCF1/p47-phox subunit to the C-terminus of CYBA/p22-phox (By similarity). NADPH oxidase complex assembly is impaired through interaction with NRROS (By similarity).

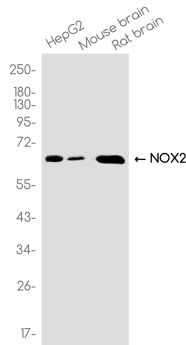
Cellular Location

Cell membrane; Multi-pass membrane protein. Note=As unassembled monomer may localize to the endoplasmic reticulum

Tissue Location

Detected in neutrophils (at protein level).

Images



Please note: All products are 'FOR RESEARCH USE ONLY. NOT FOR USE IN DIAGNOSTIC OR THERAPEUTIC PROCEDURES'.