

NADPH Oxidase 4 Rabbit mAb

Catalog # AP78952

Product Information

Application	WB, IHC-P, IF, ICC, IP
Primary Accession	Q9NPH5
Reactivity	Rat, Human, Mouse
Host	Rabbit
Clonality	Monoclonal Antibody
Isotype	IgG
Conjugate	Unconjugated
Immunogen	A synthesized peptide derived from human NOX4
Purification	Affinity Chromatography
Calculated MW	66932

Additional Information

Gene ID	50507
Other Names	NOX4
Dilution	WB~~1/500-1/1000 IHC-P~~N/A IF~~1:50~200 ICC~~N/A IP~~N/A
Format	Liquid in 10mM PBS, pH 7.4, 150mM sodium chloride, 0.05% BSA, 0.02% sodium azide and 50% glycerol.
Storage	Store at 4°C short term. Aliquot and store at -20°C long term. Avoid freeze/thaw cycles.

Protein Information

Name	NOX4
Synonyms	RENOX
Function	<p>NADPH oxidase that catalyzes predominantly the reduction of oxygen to H₂O₂ (PubMed:14966267, PubMed:15356101, PubMed:15927447, PubMed:21343298, PubMed:25062272). Can also catalyze to a smaller extent, the reduction of oxygen to superoxide (PubMed:10869423, PubMed:11032835, PubMed:15155719, PubMed:15572675, PubMed:15927447, PubMed:16019190, PubMed:16179589, PubMed:16230378, PubMed:16324151, PubMed:25062272). May function as an oxygen sensor regulating the KCNK3/TASK-1 potassium channel and HIF1A activity (PubMed:16019190). May regulate insulin signaling cascade (PubMed:14966267). May play a role in apoptosis, bone resorption and lipopolysaccharide-mediated activation of NFκB (PubMed:15356101, PubMed:15572675). May produce superoxide in the nucleus and play a role in</p>

regulating gene expression upon cell stimulation (PubMed:[16324151](#)). Promotes ferroptosis, reactive oxygen species production and reduced glutathione (GSH) levels by activating NLRP3 inflammasome activation and cytokine release (PubMed:[39909992](#)).

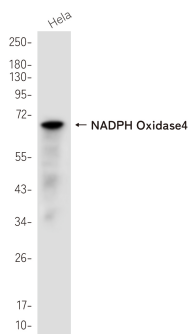
Cellular Location

Cytoplasm. Endoplasmic reticulum membrane; Multi-pass membrane protein. Cell membrane; Multi-pass membrane protein. Cell junction, focal adhesion {ECO:0000250|UniProtKB:Q924V1}. Nucleus [Isoform 3]: Cytoplasm. Cytoplasm, perinuclear region [Isoform 6]: Cytoplasm. Cytoplasm, perinuclear region

Tissue Location

Expressed by distal tubular cells in kidney cortex and in endothelial cells (at protein level). Widely expressed. Strongly expressed in kidney and to a lower extent in heart, adipocytes, hepatoma, endothelial cells, skeletal muscle, brain, several brain tumor cell lines and airway epithelial cells

Images



Please note: All products are 'FOR RESEARCH USE ONLY. NOT FOR USE IN DIAGNOSTIC OR THERAPEUTIC PROCEDURES'.