

Phospho-Vimentin (Ser39) Rabbit mAb

Catalog # AP78925

Product Information

Application	WB
Primary Accession	P08670
Reactivity	Rat, Human, Mouse
Host	Rabbit
Clonality	Monoclonal Antibody
Isotype	IgG
Conjugate	Unconjugated
Immunogen	A synthesized peptide derived from human Phospho-Vimentin (S39)
Purification	Affinity Chromatography
Calculated MW	53652

Additional Information

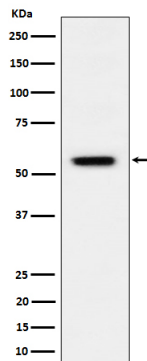
Gene ID	7431
Other Names	VIM
Dilution	WB~~1/500-1/1000
Format	Liquid in 10mM PBS, pH 7.4, 150mM sodium chloride, 0.05% BSA, 0.02% sodium azide and 50% glycerol.
Storage	Store at 4°C short term. Aliquot and store at -20°C long term. Avoid freeze/thaw cycles.

Protein Information

Name	VIM (HGNC:12692)
Function	Vimentins are class-III intermediate filaments found in various non-epithelial cells, especially mesenchymal cells. Vimentin is attached to the nucleus, endoplasmic reticulum, and mitochondria, either laterally or terminally. Plays a role in cell directional movement, orientation, cell sheet organization and Golgi complex polarization at the cell migration front (By similarity). Protects SCRIB from proteasomal degradation and facilitates its localization to intermediate filaments in a cell contact-mediated manner (By similarity).
Cellular Location	Cytoplasm. Cytoplasm, cytoskeleton. Nucleus matrix {ECO:0000250 UniProtKB:P31000}. Cell membrane {ECO:0000250 UniProtKB:P20152}
Tissue Location	Highly expressed in fibroblasts, some expression in T- and B-lymphocytes,

and little or no expression in Burkitt's lymphoma cell lines. Expressed in many hormone-independent mammary carcinoma cell lines.

Images



Please note: All products are 'FOR RESEARCH USE ONLY. NOT FOR USE IN DIAGNOSTIC OR THERAPEUTIC PROCEDURES'.