

Phospho-JAK1 (Tyr1034/Tyr1035) Rabbit mAb

Catalog # AP78918

Product Information

Application	WB, IHC-P
Primary Accession	P23458
Reactivity	Human
Host	Rabbit
Clonality	Monoclonal Antibody
Isotype	IgG
Conjugate	Unconjugated
Immunogen	A synthesized peptide derived from human Phospho-JAK1 (Y1034 + Y1035)
Purification	Affinity Chromatography
Calculated MW	133277

Additional Information

Gene ID	3716
Other Names	JAK1
Dilution	WB~~1/500-1/1000 IHC-P~~N/A
Format	Liquid in 10mM PBS, pH 7.4, 150mM sodium chloride, 0.05% BSA, 0.02% sodium azide and 50% glycerol.
Storage	Store at 4°C short term. Aliquot and store at -20°C long term. Avoid freeze/thaw cycles.

Protein Information

Name	JAK1
Synonyms	JAK1A, JAK1B
Function	Tyrosine kinase of the non-receptor type, involved in the IFN-alpha/beta/gamma signal pathway (PubMed: 16239216 , PubMed: 28111307 , PubMed: 32750333 , PubMed: 7615558 , PubMed: 8232552). Kinase partner for the interleukin (IL)-2 receptor (PubMed: 11909529) as well as interleukin (IL)-10 receptor (PubMed: 12133952). Kinase partner for the type I interferon receptor IFNAR2 (PubMed: 16239216 , PubMed: 28111307 , PubMed: 32750333 , PubMed: 7615558 , PubMed: 8232552). In response to interferon-binding to IFNAR1-IFNAR2 heterodimer, phosphorylates and activates its binding partner IFNAR2, creating docking sites for STAT proteins (PubMed: 7759950). Directly phosphorylates STAT proteins but also activates STAT signaling through the transactivation of other JAK kinases associated with signaling receptors (PubMed: 16239216 , PubMed: 32750333 ,

PubMed:[8232552](#)).

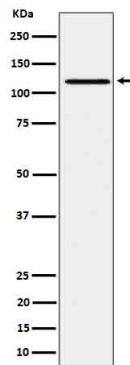
Cellular Location

Endomembrane system; Peripheral membrane protein. Note=Wholly intracellular, possibly membrane associated

Tissue Location

Expressed at higher levels in primary colon tumors than in normal colon tissue. The expression level in metastatic colon tumors is comparable to the expression level in normal colon tissue

Images



Please note: All products are 'FOR RESEARCH USE ONLY. NOT FOR USE IN DIAGNOSTIC OR THERAPEUTIC PROCEDURES'.