

Phospho-MCM2 (Ser108) Rabbit mAb

Catalog # AP78913

Product Information

Primary Accession	P49736
Host	Rabbit
Clonality	Monoclonal Antibody
Calculated MW	101896

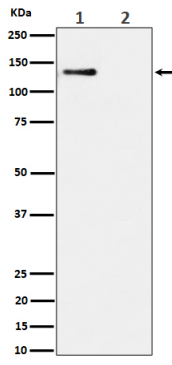
Additional Information

Gene ID	4171
Other Names	MCM2
Format	Liquid
Storage	Store at 4°C short term. Aliquot and store at -20°C long term. Avoid freeze/thaw cycles.

Protein Information

Name	MCM2 (HGNC:6944)
Function	Acts as a component of the MCM2-7 complex (MCM complex) which is the replicative helicase essential for 'once per cell cycle' DNA replication initiation and elongation in eukaryotic cells. Core component of CDC45-MCM-GINS (CMG) helicase, the molecular machine that unwinds template DNA during replication, and around which the replisome is built (PubMed: 32453425 , PubMed: 34694004 , PubMed: 34700328 , PubMed: 35585232). The active ATPase sites in the MCM2-7 ring are formed through the interaction surfaces of two neighboring subunits such that a critical structure of a conserved arginine finger motif is provided in trans relative to the ATP-binding site of the Walker A box of the adjacent subunit. The six ATPase active sites, however, are likely to contribute differentially to the complex helicase activity (PubMed: 32453425). Required for the entry in S phase and for cell division (PubMed: 8175912). Plays a role in terminally differentiated hair cells development of the cochlea and induces cells apoptosis (PubMed: 26196677).
Cellular Location	Nucleus. Chromosome. Note=Associated with chromatin before the formation of nuclei and detaches from it as DNA replication progresses. {ECO:0000250 UniProtKB:P55861}

Images



Please note: All products are 'FOR RESEARCH USE ONLY. NOT FOR USE IN DIAGNOSTIC OR THERAPEUTIC PROCEDURES'.