

Phospho-IKB alpha (Ser36) Rabbit mAb

Catalog # AP78905

Product Information

Application	WB, FC
Primary Accession	P25963
Reactivity	Human, Mouse
Host	Rabbit
Clonality	Monoclonal Antibody
Isotype	IgG
Conjugate	Unconjugated
Immunogen	A synthesized peptide derived from human Phospho-IKB alpha (S36)
Purification	Affinity Chromatography
Calculated MW	35609

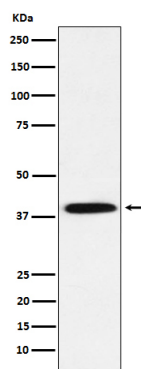
Additional Information

Gene ID	4792
Other Names	NFKBIA
Dilution	WB~~1/500-1/1000 FC~~1:10~50
Format	Liquid in 10mM PBS, pH 7.4, 150mM sodium chloride, 0.05% BSA, 0.02% sodium azide and 50% glycerol.
Storage	Store at 4°C short term. Aliquot and store at -20°C long term. Avoid freeze/thaw cycles.

Protein Information

Name	NFKBIA
Synonyms	IKBA, MAD3, NFKBI
Function	Inhibits the activity of dimeric NF-kappa-B/REL complexes by trapping REL (RELA/p65 and NFKB1/p50) dimers in the cytoplasm by masking their nuclear localization signals (PubMed: 1493333 , PubMed: 36651806 , PubMed: 7479976). On cellular stimulation by immune and pro-inflammatory responses, becomes phosphorylated promoting ubiquitination and degradation, enabling the dimeric RELA to translocate to the nucleus and activate transcription (PubMed: 7479976 , PubMed: 7628694 , PubMed: 7796813 , PubMed: 7878466).
Cellular Location	Cytoplasm. Nucleus. Note=Shuttles between the nucleus and the cytoplasm by a nuclear localization signal (NLS) and a CRM1-dependent nuclear export.

Images



Please note: All products are 'FOR RESEARCH USE ONLY. NOT FOR USE IN DIAGNOSTIC OR THERAPEUTIC PROCEDURES'.