

Phospho-ErbB3 (Tyr1222) Rabbit mAb

Catalog # AP78903

Product Information

Application	WB, IF, ICC, IP
Primary Accession	P21860
Reactivity	Human
Host	Rabbit
Clonality	Monoclonal Antibody
Isotype	IgG
Conjugate	Unconjugated
Immunogen	A synthesized peptide derived from human ErbB3
Purification	Affinity Chromatography
Calculated MW	148098

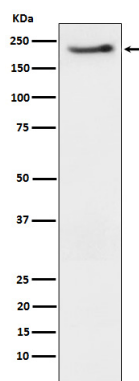
Additional Information

Gene ID	2065
Other Names	ERBB3
Dilution	WB~~1/500-1/1000 IF~~1:50~200 ICC~~N/A IP~~N/A
Format	Liquid in 10mM PBS, pH 7.4, 150mM sodium chloride, 0.05% BSA, 0.02% sodium azide and 50% glycerol.
Storage	Store at 4°C short term. Aliquot and store at -20°C long term. Avoid freeze/thaw cycles.

Protein Information

Name	ERBB3
Synonyms	HER3
Function	Tyrosine-protein kinase that plays an essential role as cell surface receptor for neuregulins. Binds to neuregulin-1 (NRG1) and is activated by it; ligand-binding increases phosphorylation on tyrosine residues and promotes its association with the p85 subunit of phosphatidylinositol 3-kinase (PubMed: 20682778). May also be activated by CSPG5 (PubMed: 15358134). Involved in the regulation of myeloid cell differentiation (PubMed: 27416908).
Cellular Location	[Isoform 1]: Cell membrane; Single-pass type I membrane protein
Tissue Location	Epithelial tissues and brain.

Images



Please note: All products are 'FOR RESEARCH USE ONLY. NOT FOR USE IN DIAGNOSTIC OR THERAPEUTIC PROCEDURES'.