

Desmocollin 1 Rabbit mAb

Catalog # AP78867

Product Information

Application	WB
Primary Accession	Q08554
Reactivity	Rat, Human, Mouse
Host	Rabbit
Clonality	Monoclonal Antibody
Isotype	IgG
Conjugate	Unconjugated
Immunogen	A synthesized peptide derived from human Desmocollin 1
Purification	Affinity Chromatography
Calculated MW	99987

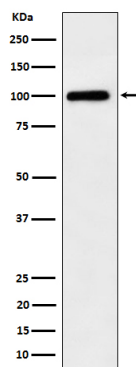
Additional Information

Gene ID	1823
Other Names	DSC1
Dilution	WB~~1/500-1/1000
Format	Liquid in 10mM PBS, pH 7.4, 150mM sodium chloride, 0.05% BSA, 0.02% sodium azide and 50% glycerol.
Storage	Store at 4°C short term. Aliquot and store at -20°C long term. Avoid freeze/thaw cycles.

Protein Information

Name	DSC1
Synonyms	CDHF1
Function	A component of desmosome cell-cell junctions which are required for positive regulation of cellular adhesion (By similarity). Required for desmosome adhesion strength between the granular layers of the epidermis, as a result moderates epidermal proliferation and differentiation (By similarity). Is therefore required to maintain postnatal epidermal barrier function and normal hair follicle morphology into adulthood (By similarity).
Cellular Location	Cell membrane; Single-pass type I membrane protein. Cell junction, desmosome {ECO:0000250 UniProtKB:P55849}
Tissue Location	Strongly expressed in epidermis, less in lymph node and tongue.

Images



Please note: All products are 'FOR RESEARCH USE ONLY. NOT FOR USE IN DIAGNOSTIC OR THERAPEUTIC PROCEDURES'.