

Palladin Rabbit mAb

Catalog # AP78866

Product Information

Application	WB
Primary Accession	Q8WX93
Reactivity	Human
Host	Rabbit
Clonality	Monoclonal Antibody
Isotype	IgG
Conjugate	Unconjugated
Immunogen	A synthesized peptide derived from human Palladin
Purification	Affinity Chromatography
Calculated MW	150564

Additional Information

Gene ID	23022
Other Names	PALLD
Dilution	WB~~1/500-1/1000
Format	Liquid in 10mM PBS, pH 7.4, 150mM sodium chloride, 0.05% BSA, 0.02% sodium azide and 50% glycerol.
Storage	Store at 4°C short term. Aliquot and store at -20°C long term. Avoid freeze/thaw cycles.

Protein Information

Name	PALLD
Synonyms	KIAA0992
Function	Cytoskeletal protein required for organization of normal actin cytoskeleton. Roles in establishing cell morphology, motility, cell adhesion and cell-extracellular matrix interactions in a variety of cell types. May function as a scaffolding molecule with the potential to influence both actin polymerization and the assembly of existing actin filaments into higher-order arrays. Binds to proteins that bind to either monomeric or filamentous actin. Localizes at sites where active actin remodeling takes place, such as lamellipodia and membrane ruffles. Different isoforms may have functional differences. Involved in the control of morphological and cytoskeletal changes associated with dendritic cell maturation. Involved in targeting ACTN to specific subcellular foci.

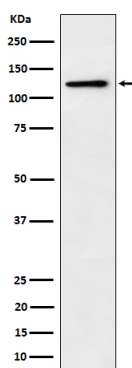
Cellular Location

Cytoplasm, cytoskeleton. Cell junction, focal adhesion. Cytoplasm, myofibril, sarcomere, Z line. Cell projection, ruffle. Cell projection, podosome {ECO:0000250|UniProtKB:P0C5E3}. Cell projection, lamellipodium. Cell projection, axon {ECO:0000250|UniProtKB:P0C5E3}. Cell projection, growth cone {ECO:0000250|UniProtKB:P0C5E3}. Note=Localizes to stress fibers and Z lines (PubMed:11598191, PubMed:16125169, PubMed:17322171, PubMed:17537434). Preferentially expressed in the excitatory presynaptic terminals (By similarity). {ECO:0000250|UniProtKB:P0C5E3, ECO:0000269|PubMed:11598191, ECO:0000269|PubMed:16125169, ECO:0000269|PubMed:17322171, ECO:0000269|PubMed:17537434}

Tissue Location

Detected in both muscle and non-muscle tissues. High expression in prostate, ovary, colon, and kidney. Not detected in spleen, skeletal muscle, lung and peripheral blood lymphocytes (at protein level). Protein is overexpressed in FA6, HPAF, IMIM-PC2, SUI-2 and PancTu-II sporadic pancreatic cancer cell lines

Images



Please note: All products are 'FOR RESEARCH USE ONLY. NOT FOR USE IN DIAGNOSTIC OR THERAPEUTIC PROCEDURES'.