

EXOC2 Rabbit mAb

Catalog # AP78861

Product Information

| | |
|--------------------------|--|
| Application | WB |
| Primary Accession | Q96KP1 |
| Reactivity | Rat, Human, Mouse |
| Host | Rabbit |
| Clonality | Monoclonal Antibody |
| Isotype | IgG |
| Conjugate | Unconjugated |
| Immunogen | A synthesized peptide derived from human EXOC2 |
| Purification | Affinity Chromatography |
| Calculated MW | 104066 |

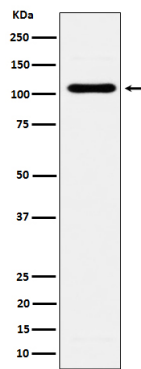
Additional Information

| | |
|--------------------|--|
| Gene ID | 55770 |
| Other Names | EXOC2 |
| Dilution | WB~~1/500-1/1000 |
| Format | Liquid in 10mM PBS, pH 7.4, 150mM sodium chloride, 0.05% BSA, 0.02% sodium azide and 50% glycerol. |
| Storage | Store at 4°C short term. Aliquot and store at -20°C long term. Avoid freeze/thaw cycles. |

Protein Information

| | |
|--------------------------|---|
| Name | EXOC2 |
| Synonyms | SEC5, SEC5L1 |
| Function | Component of the exocyst complex involved in the docking of exocytic vesicles with fusion sites on the plasma membrane. |
| Cellular Location | Midbody, Midbody ring Note=Recruitment to the midbody does not require RALA, nor RALB (PubMed:18756269). Colocalizes with CNTRL/centriolin at the midbody ring (PubMed:16213214). |
| Tissue Location | Widely expressed with highest levels in brain and placenta. |

Images



Please note: All products are 'FOR RESEARCH USE ONLY. NOT FOR USE IN DIAGNOSTIC OR THERAPEUTIC PROCEDURES'.