

# HSPC150 Rabbit mAb

Catalog # AP78860

## Product Information

---

<b>Application</b>	WB
<b>Primary Accession</b>	<a href="#">Q9NPD8</a>
<b>Reactivity</b>	Human
<b>Host</b>	Rabbit
<b>Clonality</b>	Monoclonal Antibody
<b>Isotype</b>	IgG
<b>Conjugate</b>	Unconjugated
<b>Immunogen</b>	A synthesized peptide derived from human HSPC150
<b>Purification</b>	Affinity Chromatography
<b>Calculated MW</b>	22521

## Additional Information

---

<b>Gene ID</b>	29089
<b>Other Names</b>	UBE2T
<b>Dilution</b>	WB~~1/500-1/1000
<b>Format</b>	Liquid in 10mM PBS, pH 7.4, 150mM sodium chloride, 0.05% BSA, 0.02% sodium azide and 50% glycerol.
<b>Storage</b>	Store at 4°C short term. Aliquot and store at -20°C long term. Avoid freeze/thaw cycles.

## Protein Information

---

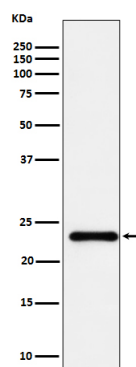
<b>Name</b>	UBE2T
<b>Function</b>	Accepts ubiquitin from the E1 complex and catalyzes its covalent attachment to other proteins. Catalyzes monoubiquitination. Involved in mitomycin-C (MMC)-induced DNA repair. Acts as a specific E2 ubiquitin-conjugating enzyme for the Fanconi anemia complex by associating with E3 ubiquitin-protein ligase FANCL and catalyzing monoubiquitination of FANCD2, a key step in the DNA damage pathway (PubMed: <a href="#">16916645</a> , PubMed: <a href="#">17938197</a> , PubMed: <a href="#">19111657</a> , PubMed: <a href="#">19589784</a> , PubMed: <a href="#">28437106</a> ). Also mediates monoubiquitination of FANCL and FANCI (PubMed: <a href="#">16916645</a> , PubMed: <a href="#">17938197</a> , PubMed: <a href="#">19111657</a> , PubMed: <a href="#">19589784</a> ). May contribute to ubiquitination and degradation of BRCA1 (PubMed: <a href="#">19887602</a> ). In vitro able to promote polyubiquitination using all 7 ubiquitin Lys residues, but may prefer 'Lys-11', 'Lys-27', 'Lys-48' and 'Lys-63'-linked polyubiquitination (PubMed: <a href="#">20061386</a> ).

## Cellular Location

Nucleus. Note=Accumulates to chromatin

## Images

---



Please note: All products are 'FOR RESEARCH USE ONLY. NOT FOR USE IN DIAGNOSTIC OR THERAPEUTIC PROCEDURES'.