

IL-1 beta Rabbit mAb

Catalog # AP78820

Product Information

Application	WB, FC, IP
Primary Accession	P10749
Reactivity	Mouse
Host	Rabbit
Clonality	Monoclonal Antibody
Isotype	IgG
Conjugate	Unconjugated
Immunogen	A synthesized peptide derived from human IL1 beta
Purification	Affinity Chromatography
Calculated MW	30931

Additional Information

Gene ID	16176
Other Names	IL1B
Dilution	WB~~1/500-1/1000 FC~~1:10~50 IP~~N/A
Format	Liquid in 10mM PBS, pH 7.4, 150mM sodium chloride, 0.05% BSA, 0.02% sodium azide and 50% glycerol.
Storage	Store at 4°C short term. Aliquot and store at -20°C long term. Avoid freeze/thaw cycles.

Protein Information

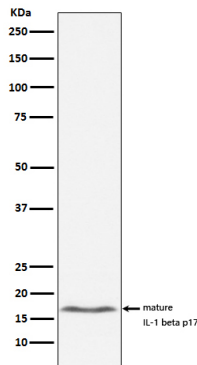
Name	Il1b
Function	Potent pro-inflammatory cytokine. Initially discovered as the major endogenous pyrogen, induces prostaglandin synthesis, neutrophil influx and activation, T-cell activation and cytokine production, B- cell activation and antibody production, and fibroblast proliferation and collagen production. Promotes Th17 differentiation of T-cells. Synergizes with IL12/interleukin-12 to induce IFNG synthesis from T- helper 1 (Th1) cells. Plays a role in angiogenesis by inducing VEGF production synergistically with TNF and IL6. Involved in transduction of inflammation downstream of pyroptosis: its mature form is specifically released in the extracellular milieu by passing through the gasdermin-D (GSDMD) pore.
Cellular Location	Cytoplasm, cytosol. Secreted Lysosome {ECO:0000250 UniProtKB:P01584}. Secreted, extracellular exosome. Note=The precursor is cytosolic In response to inflammasome-activating signals, such as ATP for NLRP3 inflammasome or

bacterial flagellin for NLRC4 inflammasome, cleaved and secreted. Mature form is secreted and released in the extracellular milieu by passing through the gasdermin-D (GSDMD) pore. In contrast, the precursor form is not released, due to the presence of an acidic region that is proteolytically removed by CASP1 during maturation. The secretion is dependent on protein unfolding and facilitated by the cargo receptor TMED10. {ECO:0000250|UniProtKB:P01584}

Tissue Location

Expressed in activated macrophages (at protein level).

Images



Please note: All products are 'FOR RESEARCH USE ONLY. NOT FOR USE IN DIAGNOSTIC OR THERAPEUTIC PROCEDURES'.