

Kallikrein 8 Rabbit mAb

Catalog # AP78809

Product Information

Application	WB, IHC-P
Primary Accession	O60259
Reactivity	Human
Host	Rabbit
Clonality	Monoclonal Antibody
Isotype	IgG
Conjugate	Unconjugated
Immunogen	A synthesized peptide derived from human Kallikrein 8
Purification	Affinity Chromatography
Calculated MW	28048

Additional Information

Gene ID	11202
Other Names	KLK8
Dilution	WB~~1/500-1/1000 IHC-P~~N/A
Format	Liquid in 10mM PBS, pH 7.4, 150mM sodium chloride, 0.05% BSA, 0.02% sodium azide and 50% glycerol.
Storage	Store at 4°C short term. Aliquot and store at -20°C long term. Avoid freeze/thaw cycles.

Protein Information

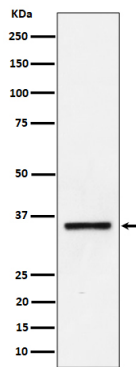
Name	KLK8
Synonyms	NRPN, PRSS19, TADG14
Function	Serine protease which is capable of degrading a number of proteins such as casein, fibrinogen, kininogen, fibronectin and collagen type IV. Also cleaves L1CAM in response to increased neural activity. Induces neurite outgrowth and fasciculation of cultured hippocampal neurons. Plays a role in the formation and maturation of orphan and small synaptic boutons in the Schaffer-collateral pathway, regulates Schaffer-collateral long-term potentiation in the hippocampus and is required for memory acquisition and synaptic plasticity. Involved in skin desquamation and keratinocyte proliferation. Plays a role in the secondary phase of pathogenesis following spinal cord injury.
Cellular Location	Secreted. Cytoplasm. Note=Shows a cytoplasmic distribution in the

keratinocytes

Tissue Location

Isoform 1 is predominantly expressed in the pancreas. Isoform 2 is expressed in adult brain and hippocampus. Isoform 1 and isoform 2 are found in fetal brain and placenta. Detected in salivary gland, uterus, thymus, breast, testis and kidney but not in spleen, liver, lung or normal ovarian tissue. Displays an 11.5-fold increase in Alzheimer disease hippocampus compared to controls and is overexpressed in some ovarian carcinomas. Expressed at low levels in normal skin while high levels are found in psoriasis vulgaris, seborrheic keratosis, lichen planus and squamous cell carcinoma skin samples. Expressed in the keratinocytes.

Images



Please note: All products are 'FOR RESEARCH USE ONLY. NOT FOR USE IN DIAGNOSTIC OR THERAPEUTIC PROCEDURES'.