

# GRAF Rabbit mAb

Catalog # AP78802

## Product Information

---

<b>Application</b>	WB, IHC-P
<b>Primary Accession</b>	<a href="#">Q9UNA1</a>
<b>Reactivity</b>	Rat, Human, Mouse
<b>Host</b>	Rabbit
<b>Clonality</b>	Monoclonal Antibody
<b>Isotype</b>	IgG
<b>Conjugate</b>	Unconjugated
<b>Immunogen</b>	A synthesized peptide derived from human GRAF
<b>Purification</b>	Affinity Chromatography
<b>Calculated MW</b>	92235

## Additional Information

---

<b>Gene ID</b>	23092
<b>Other Names</b>	ARHGAP26
<b>Dilution</b>	WB~~1/500-1/1000 IHC-P~~N/A
<b>Format</b>	Liquid in 10mM PBS, pH 7.4, 150mM sodium chloride, 0.05% BSA, 0.02% sodium azide and 50% glycerol.
<b>Storage</b>	Store at 4°C short term. Aliquot and store at -20°C long term. Avoid freeze/thaw cycles.

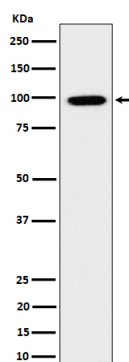
## Protein Information

---

<b>Name</b>	ARHGAP26
<b>Synonyms</b>	GRAF, KIAA0621, OPHN1L
<b>Function</b>	GTPase-activating protein for RHOA and CDC42. Facilitates mitochondrial quality control by promoting Parkin-mediated recruitment of autophagosomes to damaged mitochondria (PubMed: <a href="#">38081847</a> ). Negatively regulates the growth of human parainfluenza virus type 2 by inhibiting hPIV-2-mediated RHOA activation via interaction with two of its viral proteins P and V (PubMed: <a href="#">27512058</a> ).
<b>Cellular Location</b>	[Isoform 2]: Endosome membrane. Note=Colocalized with RAB8A, RAB8B and RAB10 on endosomal tubules.

## Images

---



Please note: All products are 'FOR RESEARCH USE ONLY. NOT FOR USE IN DIAGNOSTIC OR THERAPEUTIC PROCEDURES'.