

MYL12B Rabbit mAb

Catalog # AP78799

Product Information

Application	WB, IHC-P, IF, ICC
Primary Accession	O14950
Reactivity	Rat, Human, Mouse
Host	Rabbit
Clonality	Monoclonal Antibody
Isotype	IgG
Conjugate	Unconjugated
Immunogen	A synthesized peptide derived from human MYL12B
Purification	Affinity Chromatography
Calculated MW	19779

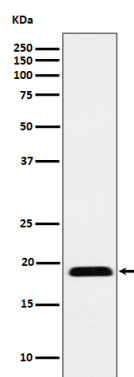
Additional Information

Gene ID	103910
Other Names	MYL12B
Dilution	WB~~1/500-1/1000 IHC-P~~N/A IF~~1:50~200 ICC~~N/A
Format	Liquid in 10mM PBS, pH 7.4, 150mM sodium chloride, 0.05% BSA, 0.02% sodium azide and 50% glycerol.
Storage	Store at 4°C short term. Aliquot and store at -20°C long term. Avoid freeze/thaw cycles.

Protein Information

Name	MYL12B
Synonyms	MRLC2, MYLC2B
Function	Myosin regulatory subunit that plays an important role in regulation of both smooth muscle and nonmuscle cell contractile activity via its phosphorylation. Phosphorylation triggers actin polymerization in vascular smooth muscle. Implicated in cytokinesis, receptor capping, and cell locomotion.
Tissue Location	Ubiquitously expressed in various hematopoietic cells.

Images



Please note: All products are 'FOR RESEARCH USE ONLY. NOT FOR USE IN DIAGNOSTIC OR THERAPEUTIC PROCEDURES'.