

# WDR68 Rabbit mAb

Catalog # AP78791

## Product Information

---

<b>Application</b>	WB, IHC-P, FC
<b>Primary Accession</b>	<a href="#">P61962</a>
<b>Reactivity</b>	Human
<b>Host</b>	Rabbit
<b>Clonality</b>	Monoclonal Antibody
<b>Isotype</b>	IgG
<b>Conjugate</b>	Unconjugated
<b>Immunogen</b>	A synthesized peptide derived from human DCAF7
<b>Purification</b>	Affinity Chromatography
<b>Calculated MW</b>	38926

## Additional Information

---

<b>Gene ID</b>	10238
<b>Other Names</b>	DCAF7
<b>Dilution</b>	WB~~1/500-1/1000 IHC-P~~N/A FC~~1:10~50
<b>Format</b>	Liquid in 10mM PBS, pH 7.4, 150mM sodium chloride, 0.05% BSA, 0.02% sodium azide and 50% glycerol.
<b>Storage</b>	Store at 4°C short term. Aliquot and store at -20°C long term. Avoid freeze/thaw cycles.

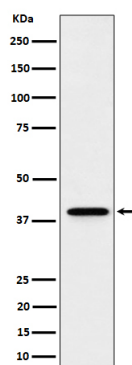
## Protein Information

---

<b>Name</b>	DCAF7
<b>Synonyms</b>	HAN11, WDR68
<b>Function</b>	Involved in craniofacial development. Acts upstream of the EDN1 pathway and is required for formation of the upper jaw equivalent, the palatoquadrate. The activity required for EDN1 pathway function differs between the first and second arches (By similarity). Associates with DIAPH1 and controls GLI1 transcriptional activity. Could be involved in normal and disease skin development. May function as a substrate receptor for CUL4-DDB1 E3 ubiquitin-protein ligase complex.
<b>Cellular Location</b>	Cytoplasm. Nucleus. Note=Overexpression of DIAHP1 or active RHOA causes translocation from the nucleus to cytoplasm

## Images

---



Please note: All products are 'FOR RESEARCH USE ONLY. NOT FOR USE IN DIAGNOSTIC OR THERAPEUTIC PROCEDURES'.