

DPP3 Rabbit mAb

Catalog # AP78787

Product Information

Application	WB, FC
Primary Accession	Q9NY33
Reactivity	Human
Host	Rabbit
Clonality	Monoclonal Antibody
Isotype	IgG
Conjugate	Unconjugated
Immunogen	A synthesized peptide derived from human DPP3
Purification	Affinity Chromatography
Calculated MW	82589

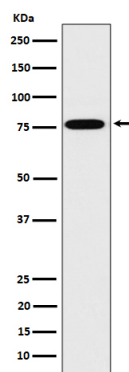
Additional Information

Gene ID	10072
Other Names	DPP3
Dilution	WB~~1/500-1/1000 FC~~1:10~50
Format	Liquid in 10mM PBS, pH 7.4, 150mM sodium chloride, 0.05% BSA, 0.02% sodium azide and 50% glycerol.
Storage	Store at 4°C short term. Aliquot and store at -20°C long term. Avoid freeze/thaw cycles.

Protein Information

Name	DPP3
Function	Cleaves and degrades bioactive peptides, including angiotensin, Leu-enkephalin and Met-enkephalin (PubMed: 1515063 , PubMed: 3233187). Also cleaves Arg-Arg-beta-naphthylamide (in vitro) (PubMed: 11209758 , PubMed: 3233187 , PubMed: 9425109).
Cellular Location	Cytoplasm, cytosol
Tissue Location	Detected in placenta (at protein level) (PubMed:3233187). Detected in erythrocytes (at protein level) (PubMed:1515063).

Images



Please note: All products are 'FOR RESEARCH USE ONLY. NOT FOR USE IN DIAGNOSTIC OR THERAPEUTIC PROCEDURES'.