

ELP4 Rabbit mAb

Catalog # AP78780

Product Information

Application	WB, IHC-P, IF, ICC
Primary Accession	Q96EB1
Reactivity	Human, Mouse
Host	Rabbit
Clonality	Monoclonal Antibody
Isotype	IgG
Conjugate	Unconjugated
Immunogen	A synthesized peptide derived from human ELP4
Purification	Affinity Chromatography
Calculated MW	46588

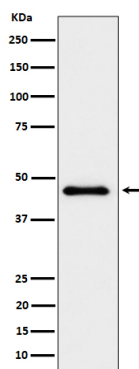
Additional Information

Gene ID	26610
Other Names	ELP4
Dilution	WB~~1/500-1/1000 IHC-P~~N/A IF~~1:50~200 ICC~~N/A
Format	Liquid in 10mM PBS, pH 7.4, 150mM sodium chloride, 0.05% BSA, 0.02% sodium azide and 50% glycerol.
Storage	Store at 4°C short term. Aliquot and store at -20°C long term. Avoid freeze/thaw cycles.

Protein Information

Name	ELP4
Synonyms	C11orf19, PAXNEB
Function	Component of the elongator complex which is required for multiple tRNA modifications, including mcm5U (5-methoxycarbonylmethyl uridine), mcm5s2U (5-methoxycarbonylmethyl-2-thiouridine), and ncm5U (5-carbamoylmethyl uridine) (PubMed: 29332244). The elongator complex catalyzes the formation of carboxymethyluridine in the wobble base at position 34 in tRNAs (PubMed: 29332244).
Cellular Location	Cytoplasm. Nucleus
Tissue Location	Widely expressed..

Images



Please note: All products are 'FOR RESEARCH USE ONLY. NOT FOR USE IN DIAGNOSTIC OR THERAPEUTIC PROCEDURES'.