

ALDH4A1 Antibody (C-term)

Purified Rabbit Polyclonal Antibody (Pab)
Catalog # AP7875b

Product Information

Application	WB, IHC-P, E
Primary Accession	P30038
Reactivity	Human
Host	Rabbit
Clonality	Polyclonal
Isotype	Rabbit IgG
Clone Names	RB16859
Antigen Region	533-561

Additional Information

Other Names	Delta-1-pyrroline-5-carboxylate dehydrogenase, mitochondrial, P5C dehydrogenase, Aldehyde dehydrogenase family 4 member A1, L-glutamate gamma-semialdehyde dehydrogenase, ALDH4A1, ALDH4, P5CDH
Target/Specificity	This ALDH4A1 antibody is generated from rabbits immunized with a KLH conjugated synthetic peptide between 533-561 amino acids from the C-terminal region of human ALDH4A1.
Dilution	WB~~1:1000 IHC-P~~1:100~500 E~~Use at an assay dependent concentration.
Format	Purified polyclonal antibody supplied in PBS with 0.09% (W/V) sodium azide. This antibody is prepared by Saturated Ammonium Sulfate (SAS) precipitation followed by dialysis against PBS.
Storage	Maintain refrigerated at 2-8°C for up to 2 weeks. For long term storage store at -20°C in small aliquots to prevent freeze-thaw cycles.
Precautions	ALDH4A1 Antibody (C-term) is for research use only and not for use in diagnostic or therapeutic procedures.

Protein Information

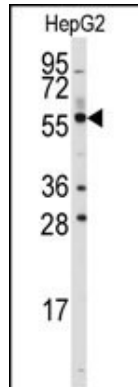
Background

ALDH4A1 belongs to the aldehyde dehydrogenase family of proteins. This enzyme is a mitochondrial matrix NAD-dependent dehydrogenase which catalyzes the second step of the proline degradation pathway, converting pyrroline-5-carboxylate to glutamate. Deficiency of this enzyme is associated with type II hyperprolinemia, an autosomal recessive disorder characterized by accumulation of delta-1-pyrroline-5-carboxylate (P5C) and proline.

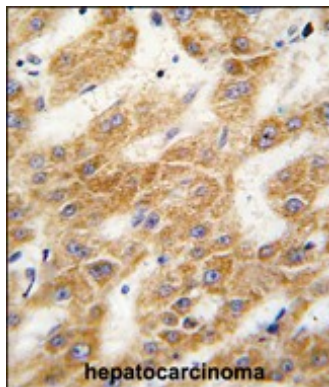
References

Yoon,K.A., J. Hum. Genet. 49 (3), 134-140 (2004)
Geraghty,M.T., Hum. Mol. Genet. 7 (9), 1411-1415 (1998)

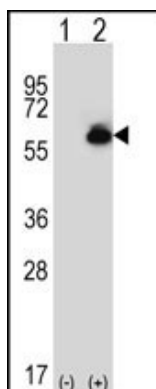
Images



Western blot analysis of anti-ALDH4A1 Antibody (C-term) (Cat.#AP7875b) in HepG2 cell line lysates (35ug/lane). ALDH4A1(arrow) was detected using the purified Pab.



Formalin-fixed and paraffin-embedded human hepatocarcinoma tissue reacted with ALDH4A1 antibody (C-term), which was peroxidase-conjugated to the secondary antibody, followed by DAB staining. This data demonstrates the use of this antibody for immunohistochemistry; clinical relevance has not been evaluated.



Western blot analysis of ALDH4A1 (arrow) using rabbit polyclonal ALDH4A1 Antibody (C-term) (Cat.#AP7875b). 293 cell lysates (2 ug/lane) either nontransfected (Lane 1) or transiently transfected (Lane 2) with the ALDH4A1 gene.

Please note: All products are 'FOR RESEARCH USE ONLY. NOT FOR USE IN DIAGNOSTIC OR THERAPEUTIC PROCEDURES'.