

Glucosidase 2 subunit beta Rabbit mAb

Catalog # AP78758

Product Information

Application	WB, IHC-P, IF, ICC
Primary Accession	P14314
Reactivity	Human
Host	Rabbit
Clonality	Monoclonal Antibody
Isotype	IgG
Conjugate	Unconjugated
Immunogen	A synthesized peptide derived from human GLU2B
Purification	Affinity Chromatography
Calculated MW	59425

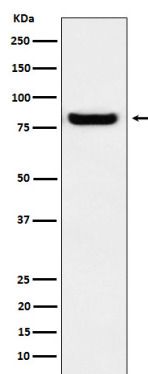
Additional Information

Gene ID	5589
Other Names	PRKCSH
Dilution	WB~~1/500-1/1000 IHC-P~~N/A IF~~1:50~200 ICC~~N/A
Format	Liquid in 10mM PBS, pH 7.4, 150mM sodium chloride, 0.05% BSA, 0.02% sodium azide and 50% glycerol.
Storage	Store at 4°C short term. Aliquot and store at -20°C long term. Avoid freeze/thaw cycles.

Protein Information

Name	PRKCSH {ECO:0000303 PubMed:28375157, ECO:0000312 HGNC:HGNC:9411}
Function	Regulatory subunit of glucosidase II that cleaves sequentially the 2 innermost alpha-1,3-linked glucose residues from the Glc(2)Man(9)GlcNAc(2) oligosaccharide precursor of immature glycoproteins (PubMed: 10929008). Required for efficient PKD1/Polycystin-1 biogenesis and trafficking to the plasma membrane of the primary cilia (By similarity).
Cellular Location	Endoplasmic reticulum {ECO:0000255 PROSITE- ProRule:PRU10138, ECO:0000305 PubMed:10929008}

Images



Please note: All products are 'FOR RESEARCH USE ONLY. NOT FOR USE IN DIAGNOSTIC OR THERAPEUTIC PROCEDURES'.