

# CCL27 Rabbit mAb

Catalog # AP78732

## Product Information

---

<b>Application</b>	WB, IF, FC, ICC
<b>Primary Accession</b>	<a href="#">Q9Y4X3</a>
<b>Reactivity</b>	Rat, Human, Mouse
<b>Host</b>	Rabbit
<b>Clonality</b>	Monoclonal Antibody
<b>Isotype</b>	IgG
<b>Conjugate</b>	Unconjugated
<b>Immunogen</b>	A synthesized peptide derived from human CCL27
<b>Purification</b>	Affinity Chromatography
<b>Calculated MW</b>	12618

## Additional Information

---

<b>Gene ID</b>	10850
<b>Other Names</b>	CCL27
<b>Dilution</b>	WB~~1/500-1/1000 IF~~1:50~200 FC~~1:10~50 ICC~~N/A
<b>Format</b>	Liquid in 10mM PBS, pH 7.4, 150mM sodium chloride, 0.05% BSA, 0.02% sodium azide and 50% glycerol.
<b>Storage</b>	Store at 4°C short term. Aliquot and store at -20°C long term. Avoid freeze/thaw cycles.

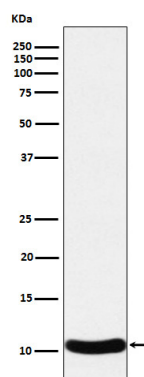
## Protein Information

---

<b>Name</b>	CCL27
<b>Synonyms</b>	ILC, SCYA27
<b>Function</b>	Chemotactic factor that attracts skin-associated memory T- lymphocytes. May play a role in mediating homing of lymphocytes to cutaneous sites. Binds to CCR10.
<b>Cellular Location</b>	Secreted {ECO:0000250 UniProtKB:Q9Z1X0}.
<b>Tissue Location</b>	Testis, thymus, placenta, ovary and skin.

## Images

---



Please note: All products are 'FOR RESEARCH USE ONLY. NOT FOR USE IN DIAGNOSTIC OR THERAPEUTIC PROCEDURES'.