

FSH beta Rabbit mAb

Catalog # AP78720

Product Information

Application	WB, IF, ICC
Primary Accession	P01225
Reactivity	Human
Host	Rabbit
Clonality	Monoclonal Antibody
Isotype	IgG
Conjugate	Unconjugated
Immunogen	A synthesized peptide derived from human FSH beta
Purification	Affinity Chromatography
Calculated MW	14700

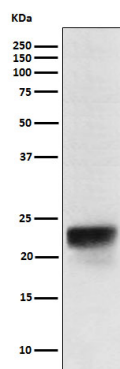
Additional Information

Gene ID	2488
Other Names	FSHB
Dilution	WB~~1/500-1/1000 IF~~1:50~200 ICC~~N/A
Format	Liquid in 10mM PBS, pH 7.4, 150mM sodium chloride, 0.05% BSA, 0.02% sodium azide and 50% glycerol.
Storage	Store at 4°C short term. Aliquot and store at -20°C long term. Avoid freeze/thaw cycles.

Protein Information

Name	FSHB
Function	Together with the alpha chain CGA constitutes follitropin, the follicle-stimulating hormone, and provides its biological specificity to the hormone heterodimer. Binds FSHR, a G protein-coupled receptor, on target cells to activate downstream signaling pathways (PubMed: 24692546 , PubMed: 2494176). Follitropin is involved in follicle development and spermatogenesis in reproductive organs (PubMed: 407105 , PubMed: 8220432).
Cellular Location	Secreted. Note=Efficient secretion requires dimerization with CGA

Images



Please note: All products are 'FOR RESEARCH USE ONLY. NOT FOR USE IN DIAGNOSTIC OR THERAPEUTIC PROCEDURES'.