

# Prostate Secretory Protein Rabbit mAb

Catalog # AP78710

## Product Information

---

<b>Application</b>	WB, IHC-P, IP
<b>Primary Accession</b>	<a href="#">P08118</a>
<b>Reactivity</b>	Human
<b>Host</b>	Rabbit
<b>Clonality</b>	Monoclonal Antibody
<b>Isotype</b>	IgG
<b>Conjugate</b>	Unconjugated
<b>Immunogen</b>	A synthesized peptide derived from human Prostate Secretory Protein/PSP
<b>Purification</b>	Affinity Chromatography
<b>Calculated MW</b>	12865

## Additional Information

---

<b>Gene ID</b>	4477
<b>Other Names</b>	MSMB
<b>Dilution</b>	WB~~1/500-1/1000 IHC-P~~N/A IP~~N/A
<b>Format</b>	Liquid in 10mM PBS, pH 7.4, 150mM sodium chloride, 0.05% BSA, 0.02% sodium azide and 50% glycerol.
<b>Storage</b>	Store at 4°C short term. Aliquot and store at -20°C long term. Avoid freeze/thaw cycles.

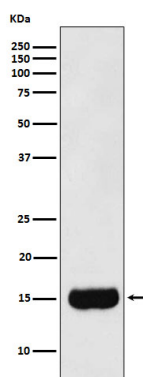
## Protein Information

---

<b>Name</b>	MSMB
<b>Synonyms</b>	PRSP
<b>Cellular Location</b>	Secreted. Note=Sperm surface.
<b>Tissue Location</b>	Strongly expressed in prostate, liver, kidney, breast and penis. Also expressed in pancreas, esophagus, stomach, deodenum, colon, trachea, lung, salivary glands and fallopian tube PSP94 is expressed in lung and breast, whereas PSP57 is found in kidney and bladder.

## Images

---



Please note: All products are 'FOR RESEARCH USE ONLY. NOT FOR USE IN DIAGNOSTIC OR THERAPEUTIC PROCEDURES'.