

# MSR1 Rabbit mAb

Catalog # AP78694

## Product Information

---

<b>Application</b>	WB
<b>Primary Accession</b>	<a href="#">P21757</a>
<b>Reactivity</b>	Rat, Human, Mouse
<b>Host</b>	Rabbit
<b>Clonality</b>	Monoclonal Antibody
<b>Isotype</b>	IgG
<b>Conjugate</b>	Unconjugated
<b>Immunogen</b>	A synthesized peptide derived from human MSR1
<b>Purification</b>	Affinity Chromatography
<b>Calculated MW</b>	49762

## Additional Information

---

<b>Gene ID</b>	4481
<b>Other Names</b>	MSR1
<b>Dilution</b>	WB~~1/500-1/1000
<b>Format</b>	Liquid in 10mM PBS, pH 7.4, 150mM sodium chloride, 0.05% BSA, 0.02% sodium azide and 50% glycerol.
<b>Storage</b>	Store at 4°C short term. Aliquot and store at -20°C long term. Avoid freeze/thaw cycles.

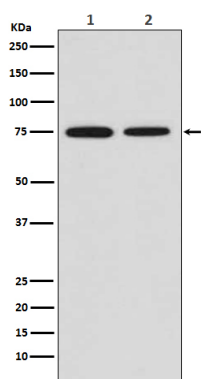
## Protein Information

---

<b>Name</b>	MSR1
<b>Synonyms</b>	SCARA1
<b>Function</b>	Membrane glycoproteins implicated in the pathologic deposition of cholesterol in arterial walls during atherogenesis. Two types of receptor subunits exist. These receptors mediate the endocytosis of a diverse group of macromolecules, including modified low density lipoproteins (LDL) (PubMed: <a href="#">2251254</a> ). Isoform III does not internalize acetylated LDL (PubMed: <a href="#">9548586</a> ).
<b>Cellular Location</b>	Membrane; Single-pass type II membrane protein.
<b>Tissue Location</b>	Isoform I, isoform II and isoform III are expressed in monocyte-derived macrophages. Isoform I and isoform II are expressed in the liver, placenta and brain.

## Images

---



Please note: All products are 'FOR RESEARCH USE ONLY. NOT FOR USE IN DIAGNOSTIC OR THERAPEUTIC PROCEDURES'.