

FKBP1B Antibody (N-term)

Purified Rabbit Polyclonal Antibody (Pab)

Catalog # AP7868d

Product Information

Application	WB, IHC-P, IF, E
Primary Accession	P68106
Other Accession	P97534 , Q8HYX6 , Q9Z2I2 , P68107
Reactivity	Human, Mouse
Predicted	Bovine, Rabbit, Rat
Host	Rabbit
Clonality	Polyclonal
Isotype	Rabbit IgG
Clone Names	RB19308
Calculated MW	11783
Antigen Region	16-46

Additional Information

Gene ID	2281
Other Names	Peptidyl-prolyl cis-trans isomerase FKBP1B, PPIase FKBP1B, 126 kDa FK506-binding protein, 126 kDa FKBP, FKBP-126, FK506-binding protein 1B, FKBP-1B, Immunophilin FKBP126, Rotamase, h-FKBP-12, FKBP1B, FKBP126, FKBP1L, FKBP9, OTK4
Target/Specificity	This FKBP1B antibody is generated from rabbits immunized with a KLH conjugated synthetic peptide between 16-46 amino acids from the N-terminal region of human FKBP1B.
Dilution	WB~~1:1000 IHC-P~~1:100~500 IF~~1:10~50 E~~Use at an assay dependent concentration.
Format	Purified polyclonal antibody supplied in PBS with 0.09% (W/V) sodium azide. This antibody is prepared by Saturated Ammonium Sulfate (SAS) precipitation followed by dialysis against PBS.
Storage	Maintain refrigerated at 2-8°C for up to 2 weeks. For long term storage store at -20°C in small aliquots to prevent freeze-thaw cycles.
Precautions	FKBP1B Antibody (N-term) is for research use only and not for use in diagnostic or therapeutic procedures.

Protein Information

Name	FKBP1B (HGNC:3712)
-------------	--------------------------------------

Function	Has the potential to contribute to the immunosuppressive and toxic effects of FK506 and rapamycin. PPIases accelerate the folding of proteins. It catalyzes the cis-trans isomerization of proline imidic peptide bonds in oligopeptides.
Cellular Location	Cytoplasm. Sarcoplasmic reticulum
Tissue Location	Detected in heart muscle (at protein level). Isoform 1 and isoform 2 are ubiquitous with highest levels in brain and thymus.

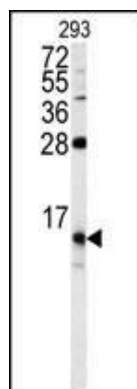
Background

FKBP1B is a member of the immunophilin protein family, which play a role in immunoregulation and basic cellular processes involving protein folding and trafficking. This protein is a cis-trans prolyl isomerase that binds the immunosuppressants FK506 and rapamycin. The protein is highly similar to the FK506-binding protein 1A. Its physiological role is thought to be in excitation-contraction coupling in cardiac muscle.

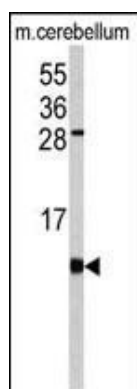
References

Arakawa H., Nagase H. *Biochem. Biophys. Res. Commun.* 200:836-843(1994)
Lam E., Martin M.M., Timmerman A.P. *Biol. Chem.* 270:26511-26522(1995)
Deivanayagam C.C., Carson M. *Acta Crystallogr. D* 56:266-271(2000)

Images

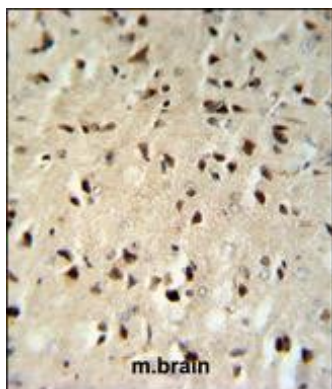


Western blot analysis of FKBP1B antibody (N-term) (Cat.# AP7868d) in 293 cell line lysates (35ug/lane). FKBP1B (arrow) was detected using the purified Pab.

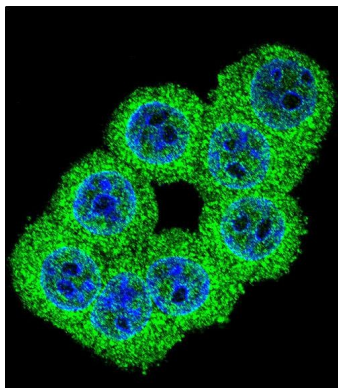


Western blot analysis of FKBP1B antibody (N-term) (Cat.# AP7868d) in mouse cerebellum tissue lysates (35ug/lane). FKBP1B (arrow) was detected using the purified Pab.

FKBP1B Antibody (N-term) (Cat.# AP7868d) IHC analysis in formalin fixed and paraffin embedded mouse brain tissue followed by peroxidase conjugation of the secondary antibody and DAB staining. This data demonstrates the use of the FKBP1B Antibody (N-term) for immunohistochemistry. Clinical relevance has not



been evaluated.



Confocal immunofluorescent analysis of FKBP1B Antibody (N-term)(Cat#AP7868d) with 293 cell followed by Alexa Fluor 488-conjugated goat anti-rabbit IgG (green). DAPI was used to stain the cell nuclear (blue).

Please note: All products are 'FOR RESEARCH USE ONLY. NOT FOR USE IN DIAGNOSTIC OR THERAPEUTIC PROCEDURES'.