

Hepcidin Rabbit mAb

Catalog # AP78685

Product Information

Application	WB
Primary Accession	P81172
Reactivity	Rat, Human
Host	Rabbit
Clonality	Monoclonal Antibody
Isotype	IgG
Conjugate	Unconjugated
Immunogen	A synthesized peptide derived from human Hepcidin
Purification	Affinity Chromatography
Calculated MW	9408

Additional Information

Gene ID	57817
Other Names	HAMP
Dilution	WB~~1/500-1/1000
Format	Liquid in 10mM PBS, pH 7.4, 150mM sodium chloride, 0.05% BSA, 0.02% sodium azide and 50% glycerol.
Storage	Store at 4°C short term. Aliquot and store at -20°C long term. Avoid freeze/thaw cycles.

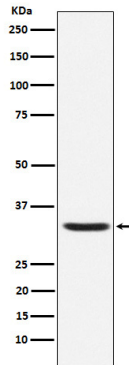
Protein Information

Name	HAMP (HGNC:15598)
Synonyms	HEPC, LEAP1
Function	Liver-produced hormone that constitutes the main circulating regulator of iron absorption and distribution across tissues. Acts by promoting endocytosis and degradation of ferroportin/SLC40A1, leading to the retention of iron in iron-exporting cells and decreased flow of iron into plasma (PubMed: 22682227 , PubMed: 29237594 , PubMed: 32814342). Controls the major flows of iron into plasma: absorption of dietary iron in the intestine, recycling of iron by macrophages, which phagocytose old erythrocytes and other cells, and mobilization of stored iron from hepatocytes (PubMed: 22306005).
Cellular Location	Secreted.

Tissue Location

Highest expression in liver and to a lesser extent in heart and brain. Low levels in lung, tonsils, salivary gland, trachea, prostate gland, adrenal gland and thyroid gland. Secreted into the urine and blood (PubMed:11034317). Expressed by hepatocytes (PubMed:15124018).

Images



Please note: All products are 'FOR RESEARCH USE ONLY. NOT FOR USE IN DIAGNOSTIC OR THERAPEUTIC PROCEDURES'.