

PDIA2 Rabbit mAb

Catalog # AP78679

Product Information

Application	WB, FC
Primary Accession	Q13087
Reactivity	Rat, Human, Mouse
Host	Rabbit
Clonality	Monoclonal Antibody
Isotype	IgG
Conjugate	Unconjugated
Immunogen	A synthesized peptide derived from human PDI
Purification	Affinity Chromatography
Calculated MW	58206

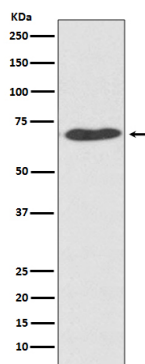
Additional Information

Gene ID	64714
Other Names	PDIA2
Dilution	WB~~1/500-1/1000 FC~~1:10~50
Format	Liquid in 10mM PBS, pH 7.4, 150mM sodium chloride, 0.05% BSA, 0.02% sodium azide and 50% glycerol.
Storage	Store at 4°C short term. Aliquot and store at -20°C long term. Avoid freeze/thaw cycles.

Protein Information

Name	PDIA2
Synonyms	PDIP
Function	Acts as an intracellular estrogen-binding protein. May be involved in modulating cellular levels and biological functions of estrogens in the pancreas. May act as a chaperone that inhibits aggregation of misfolded proteins.
Cellular Location	Endoplasmic reticulum lumen {ECO:0000255 PROSITE- ProRule:PRU10138}
Tissue Location	Highly expressed in pancreas (at protein level).

Images



Please note: All products are 'FOR RESEARCH USE ONLY. NOT FOR USE IN DIAGNOSTIC OR THERAPEUTIC PROCEDURES'.